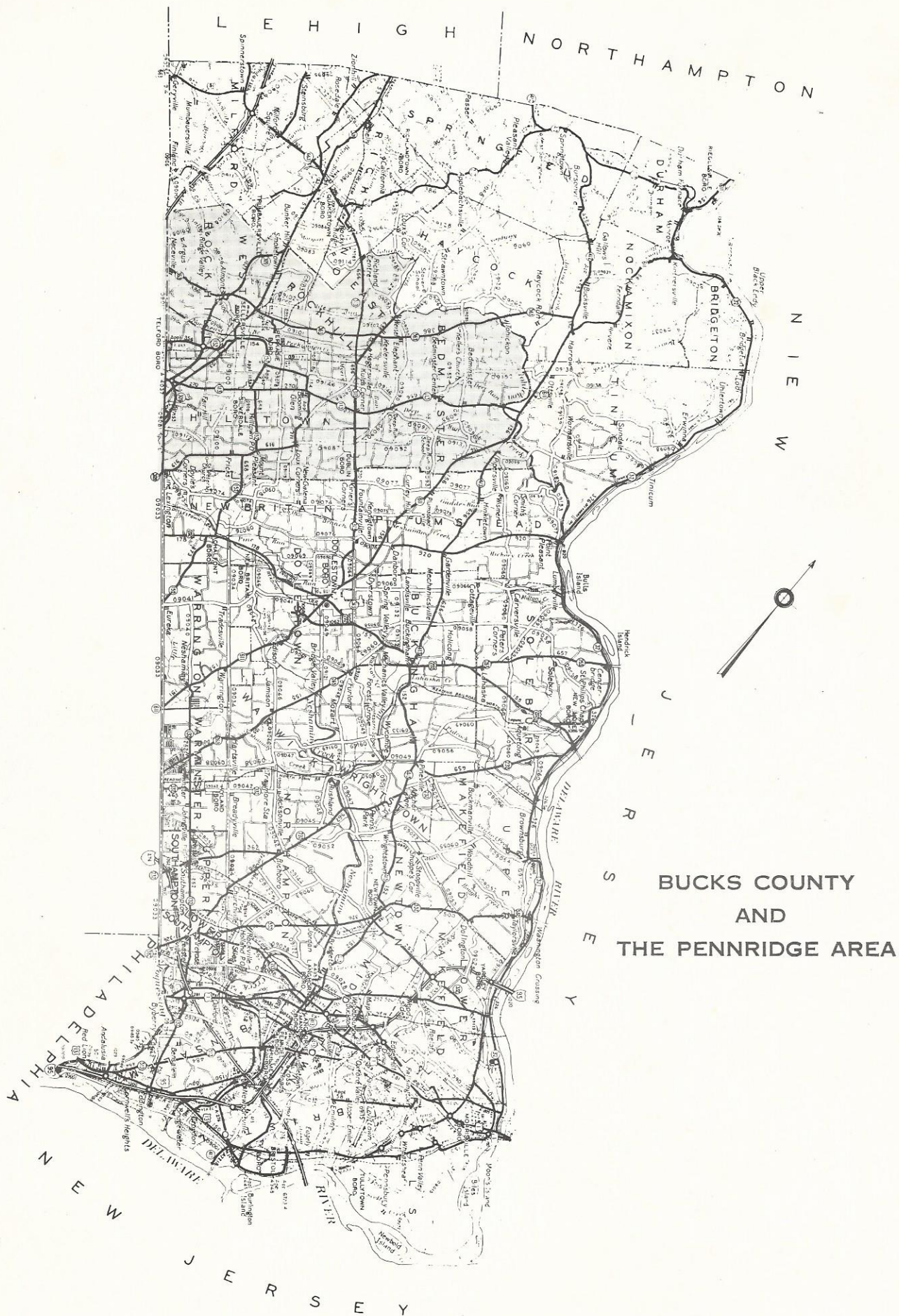


The  
**Pennridge**  
Area

Price  
2.50





### Cover Photo

Taken at the Philip F. Braungardt Farm, West Rock Road, East Rockhill Township. Photo by Charles A. Strouse, Blooming Glen.



Donations from  
former Police Chief  
Joseph Gura —

# *A Forward*

This presentation and evaluation of Pennridge is presented to create a thorough understanding of every phase of Pennridge community life, because only through such a knowledge can an individual or a family secure the necessary ingredients for living an effective and enjoyable life here and lead to greater self enjoyment and community development.

Opinions from natives whose roots run deep and relative newcomers are blended for the benefit of the family and ultimately the whole community.

The story of Pennridge, while it has individual characteristics, mirrors quite accurately that of many another community east of the Alleghenies and is in miniature the story of the development of this part of our nation.

Its 250-year maturity reflects itself in its resistance to sudden change and gives it a stability which can withstand shocks which might damage newer communities.

However, despite its age, its people have never been content to rest upon the laurels of past achievement. They have used their accomplishments as a base upon which further progress can be built. Their philosophy is wrapped up in the phrase "Be not the last to cast away the old, nor yet the first to grasp the new."

Pennridge people are relatively homogeneous. The original inhabitants were predominantly of German descent with a small sprinkling of Scotch, Irish and English. This mixture of peculiarly characteristic national traits of each produced a

population alloy much stronger than the pure strain of any one race, just as a combination of metals makes for a product with more strength and durability than the pure metal itself.

Pennridge population growth during the last century has been largely from within, but always there has been that gradual addition of outside elements which tempered and strengthened the native. But never has the influx been so great as to become unassimilable with its attendant danger of radical change in the nature of the community.

The story of Pennridge demonstrates that people are more important than the things usually labeled as natural resources in economics.

Pennridge's preeminence in industry does not rest upon natural resources. There is no navigable river or tidewater location to give Pennridge an advantage. Its resources have always been the purposeful lives of its people; their ingenuity, industry and thrift.

Every major industry in Pennridge has its origin in the fertile mind of some local citizen. So important to the national economy are Pennridge products that several of the industries have become integrated with larger national units. Pennridge is proud of its industrial achievement, for only upon it as a basis has it been able to develop a community with all the civic, social, political and commercial institutions which make it one of the best balanced in the nation. Pennridge is proof that a productive economy is the only enduring foundation upon which a sound social structure can be built.

Compliments of

## **J. Melvin Freed, Inc.**

### **Manufacturers of Flat Glass Specialties**

Since 1920



# *“Progress Thru Community Service”*

The Pennridge Chamber of Commerce and its member firms proudly present the following information booklet of the Pennridge area, a growing, rural community located in Upper Bucks County, Southeastern Pennsylvania. We are pleased to make available this publication, which presents the story of the Pennridge area in words and pictures.

The Pennridge area is a warm, friendly place to reside and work. It's an area of peace and quiet with its makeup of four boroughs and four townships. Yet it is an area centrally located in the northeast. The metropolitan areas of Philadelphia, New York, Allentown and Harrisburg are within two hours distance as are the popular recreation areas of the Poconos Mountains and the New Jersey seashore.

The Chamber of Commerce takes pride in its efforts to help improve the Pennridge area. We invite further inquiries and hope that you will want to see firsthand the assets and attractions in our area. Please contact us if we may be of assistance.



Typical Scene from a Recent Meeting of the Growing Pennridge Chamber of Commerce





New Nockamixon State Park Just East of Perkasio Has Rapidly Become A Sailor's Dream

## WE DO IT ALL!



**Fretz  
Gross &  
Spanninger**



5th & Arch Streets  
Perkasie 257-6547





# *Pennridge — A Cultural Treasure*

Being rural and rustic, pastoral and progressive, any mode of living is possible in Pennridge. Urban, suburban and village life on one hand to quiet country living as pastoral as the English, German or French countryside on the other, does not rule out even the wildly romantic natural American frontier possibilities in the wooded, watered, rockstudded hills.

An early Pennsylvanian wrote, "In Pennsylvania we have many religious opinions, but only one religion, the Pennsylvania religion of 'go a little, give a little, live and let live.'"

The richly varied religious life of Pennridge, abundantly reflects this theme of tolerance.

From the Colonial period to the present, distinguished congregations of all faiths have adorned Pennridge and sons have gone out to influence the spiritual life of the nation and the world.

From the big red barns of Pennridge farms to the family-owned dwellings of the four townships, the heritage of the past, the pride in the present and the faith in the future makes Pennridge an inspiration in living.

Culture is an everyday ingredient of life in Pennridge.

Living in a region steeped in history, there is a rich cultural heritage. From the Indians through later settlers, all have left their indelible mark. Original settlers were German, Dutch, Welsh, Scotch-Irish and Alsations. Soon others from other parts

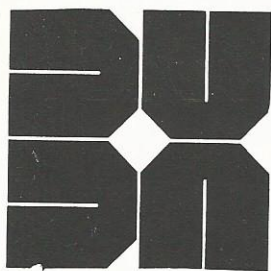
of Europe followed. Cultural traits and contributions from all have been assimilated. The cultural opportunities are bountiful.

Pennridge is the point where city and country meets. This is the rich Pennsylvania farm country, famed for its heritage and frugal, hardworking citizens.

In that Eastern Megalopolis, that super city stretching from metropolitan Boston to Washington, D.C. Pennridge lies virtually in the geographic center of that supercity. Narrowing the scope to Philadelphia and New York City, Pennridge is located directly — with a rural existence — between these metropolitan giants, and close to Trenton, N.J., Easton, Allentown and Bethlehem, in Pennsylvania.

Because of the character, location, and advantages, Pennridge holds to the past, moves in the present and prepares for the future.

The stone country houses of Pennridge fashioned of red, brown, yellow, gray, and blue stones, are set against the rolling country-side like friendly fortresses. The interiors are softly lit by deep set windows, bringing out the glow of old pine floors, paneling and furniture, often enlivened with colorful Pennsylvania Dutch motifs. Ceilings, low and often beamed, lend an informal but subtle quality that is characteristic of the area which is one of the cultural treasures of America.



**Branch Valley  
Associates, Inc.**

contractors/engineers

80 North Main Street 257-6588  
Sellersville, Pennsylvania 18960

## **PROJECTS IN THE PENNRIDGE AREA**

BETHEL BAPTIST CHURCH

BUCKS COUNTY BANK AND TRUST  
COMPANY

DEEP RUN PRESBYTERIAN CHURCH

DELBAR PRODUCTS, INC.

DE LOUX MANUFACTURING

DUBLIN FIRE COMPANY

DUDLEY SPORTS CO.

ELECTRO-MECHANICAL INSTRUMENT  
CO.

FIRST FEDERAL SAVINGS AND LOAN

FIRST UNITED METHODIST CHURCH

J. MELVIN FREED, INC.

HAPPY VIKING, LTD.

LENAPE MANUFACTURING CORP.

C. D. MOYER CO.

EUGENE MOYER AND SONS

NORTH AMERICAN DRAGER

PENNRIDGE PROFESSIONAL MEDICAL  
OFFICES

PERKASIE BOROUGH

PERKASIE FIRE COMPANY

PRECISION FINISHING

DR. NICHOLAS SABOKAR

ST. JOHN'S LUTHERAN CHURCH, RIDGE  
VALLEY

SELLERSVILLE RUG MART

SHELLY & SONS — FENSTERMACHER  
CO., INC.

VILLAGE SQUARE SHOPPING CENTER



# *Bucks County, Pennsylvania*

Named by William Penn after Buckinghamshire, England, Bucks County was one of the three original counties established in 1682 and has the distinction of being the area encompassed by Penn's first purchase treaty with the Indians on July 15, 1682. Settlements were made by the Swedes in the southeastern part of the County as early as 1670. By 1682, the English Quakers had firmly established themselves in the upper part of the County but were gradually displaced by the Germans from Montgomery County by the middle 1700's.

The County has been noted for its farms and country residences. Its central position in the Colonies made Bucks County a theatre of State and National history.

One of the earliest seminaries in the United States, known as the "Log College" was established near Neshaminy in 1726 for the purpose of educating Presbyterian Ministers. This school had a considerable influence on the founding of Princeton University.

The Durham Boat, the work boat of the eastern rivers, had its origin in Upper Bucks County and is historically important for the strategic part it played in ferrying the Revolutionary Forces across the Delaware River for the victorious Battle of Trenton. Plans for this action and the campaign against Princeton were formulated by General Washington at Keiths and Newton in Bucks County.

In area, the County is about average in size and ranks 36th in the State with 26 percent of its area in forest land and 41 percent in crop and pasture lands. Agriculture is one of the most important industries. Bucks County ranked among the top five counties in the State for production of cut flowers and foliage

plants and third for egg and honey production.

Although the County has retained its original characteristics as a residential and farming section, it has developed into one of the State's most important and highly diversified manufacturing areas. Although Bucks County is one unit, the accepted practice is to separate it into three parts; Upper, Central or Middle and Lower Bucks County.

## *Form of Government*

A three man Board of Commissioners elected at large in a municipal election. These officials serve four year terms. The method of party selection assures minority party representation on the Board.

## *County Information Service*

Pennridge residents inquiring about any information or services pertinent to Bucks County government can get a quick answer or direction to an answer by calling the Bucks County Court House. The Bucks County Information and Referral Service has been established to meet the needs of the citizens. Pennridge residents may call the Toll Free Number 249-9311 for a direct connection with the Information and Referral Service.



Business as usual, at our newest location N. Fifth Street & Blooming Glen Road, Perkasio



## **Sellersville Savings and Loan Association**

**3 Offices to Serve You**

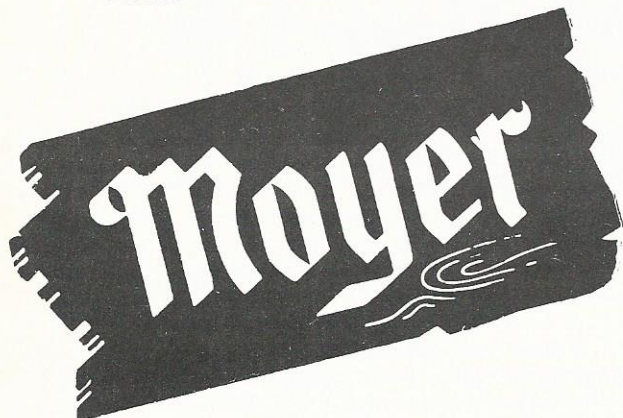
96 S. Main St.  
Sellersville  
257-4582

1445 West Broad  
Quakertown  
536-2600

N. 5th St. & Blooming Glen Road  
Perkasie  
257-6138



Consistently Dependable  
Meat Products Since 1914



2 Fine Markets To Serve You

Rt. 152 Silverdale  
next to C. D. Moyer Co.

5th Street, Perkasio  
Village of Glenwood

## *Pastorally Perfect*

The Places and Names in the foregoing history are alive today. The one-room school house has been replaced by a pioneering prominence in public and private education. The land and resources of the Pennridge people have been vital to the economy since the birth of our nation.

Today the only thing that has changed is the greatness of that role.

One fifth of the nation's people live within 200 miles of Pennridge. Expand that radius another 100 miles and one has one-third of the nation's people.

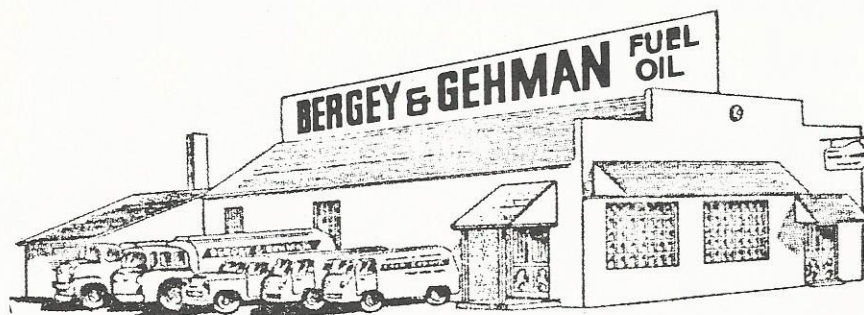
The village store and homespun industry has grown to millions of dollars in annual business. The people, the land and the location stand out in the area's wealth.

A super-highway network, rail service, and an airport in the district convenient to every home and plant, adds to the great future of Pennridge by placing this area within minutes of two of the finest airports in the world.

Pennsylvania Power and Light Co., one of the larger business-managed public utilities in the nation, supplies electric power to most of Pennridge while Philadelphia Electric Company serves Dublin and Bedminster Township. Perkasio Borough owns their own distribution system and purchases power wholesale from P.P. & L. Electric service is available at standard voltage ranging from 120 volts to 55,000 volts at 60 cycles in almost any quantity whenever it is needed.

Lehigh Valley Division of the United Gas Improvement Co. serves natural gas in Pennridge.

For water, Rockhill furnish an adequate supply to the valleys below. Perkasio and Sellersville Boroughs operate a municipal water system from Catch Basin areas, deep wells and reservoirs. A private water company serves a portion of Silverdale borough.



Fuel Oil — Bulk Gasoline — Heating & Air Conditioning  
Home Insulation

**AGWAY PETROLEUM** CORP.

formerly Bergey & Gehman

**FUEL OIL — HEATING — AIR CONDITIONING**

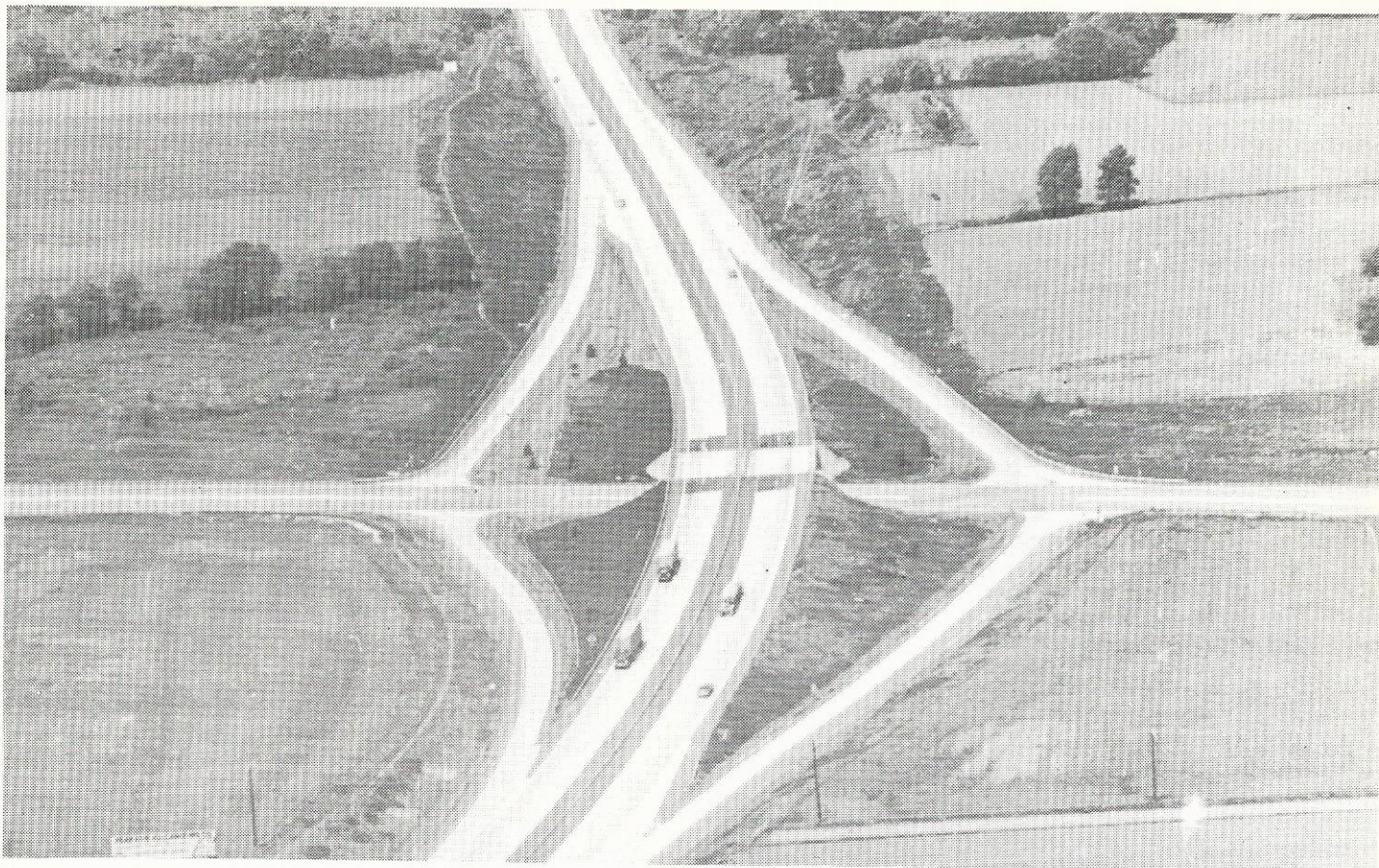
*Sales and Service*

3rd & Walnut Sts., Perkasio, Pa.

257-2764

Call Us  
For Complete  
Home Comfort





Routes 309 and 152 in West Rockhill Depict Modern Highways Leading to the Pennridge Area

We'd rather  
find a  
solution than  
ignore your  
problem.


**HELP  
IS ON THE WAY!\***

**The Provident<sup>®</sup>**  
**PROVIDENT NATIONAL BANK**  
Member FDIC





Aerial View of Dublin Looking North on Route 313



**BANKING...**  
**THE WAY YOU WANT IT**

**UNION  
NATIONAL**  
BANK & TRUST COMPANY Member FDIC

SOUDEXTON / 10 W. BROAD ST. & 6 MAIN ST. / 723-9841		
GREEN LANE	LINE LEXINGTON	SCHWENKSVILLE
HILLTOWN	MILFORD	SELLERSVILLE
KULPSVILLE	MONTGOMERYVILLE	TELFORD

## *Pennridge* *Places & Names*

From the Bucks County Historical Society

### ALBRIGHT'S CORNER

A hamlet of homes on the Old Bethlehem Road in Hilltown Township, at the summit of the high ridge that crosses the township. The place was named for Daniel Albright. The original family name was Albrecht, from Germany. On present maps Albright's Corner is Loux's Corner.

### ALMONT

Village in southwestern West Rockhill Township on the Ridge Road — Route 563, about a mile west of Sellersville. Its early name was Schlicter, from a family of that name. The old graveyard, in use as early as 1750, is a landmark of the neighborhood. Pennsylvania Germans were the early settlers with Nase, Zellner, Getman among the names.

### ARGUS

A hamlet in West Rockhill Township, near Ridge Valley, three miles west of Sellersville.

### BEDMINSTER

A village near the center of Bedminster Township on Route 113. It was known in the past as Bedminsterville. The center of life in Bedminster, always the focal point for the surrounding farms, has been the village store now operated by the Wasser family.

### BEDMINSTER CENTRE

A small village in Bedminster Township on the road from Bedminster to the Deep Run Presbyterian Church.

### BEDMINSTER TOWNSHIP

The most eastern part of the Pennridge area, it is separated from Haycock on the northwest and from Tinicum on the northeast by Tohickon Creek, bounded on the southeast by Plumstead and on the southwest by Hilltown and East Rockhill Townships. The name is taken from an English town. First settlers were from northern Ireland. They established the Deep Run Presbyterian Church — Irish Meeting House — in 1725. The Irish moved to the Carolinas and the Mennonites followed into Bedminster. In 1746 the Mennonites built their first church there and the names of Swartz, Gross, Wismer, Overholt and Landis became permanent. A division in the church in 1849 resulted in the organization of another Mennonite congregation in the township.

### BLOOMING GLEN

A village in the northeastern part of Hilltown Township, on Route 113. It was once called Perkasio. Around 1875 the present name of Blooming Glen originated. A church center with two village stores, both now closed, the village has had a bright sports past with closely-knit teams winning titles against bigger communities. Arc-light softball is a present followup to a brilliant sports past.

### DEEP RUN

A creek that rises in Hilltown Township near Greers Corner,



it flows northeasterly across the entire southeastern part of Bedminster Township and empties into the Tohickon Creek, a mile from Pipersville. Deep Run was the name given to the territory prior to the adoption of the name Bedminster. It also is the name given the school system that comprised Bedminster, East Rockhill and Hilltown Townships before the complete school jointure with Pennridge.

#### DUBLIN

A borough on Route 313, it is on the township line between Hilltown and Bedminster Townships. Dublin was incorporated in 1912 from parts of each township. Irish were the early settlers with Germans following. Located on a much-traveled highway, a log tavern was erected at an early date. There is a tradition that the second of several taverns built on the site of the first log tavern was a double log cabin, perhaps in addition to the first, with a chimney built between them. Local historians allege that from this double tavern, the village received the name of Double Inn and that this name was naturally corrupted into Dublin. By its location Dublin has always been a busy business center and is today. In past baseball annals, Dublin has had its share of glory. The first night softball lights in the Pennridge area were in Dublin and the Deep Run Little League Field is located there now.

#### ELEPHANT (THE)

A hamlet and old hotel in northwestern Bedminster Township on Old Route 563. The name is from the hotel sign.

#### FAIRHILL

A village in central southwestern Hilltown Township on a prominent ridge about three miles southeast of Sellersville. The village was originally called Schnabletown, named from the Schnable family. The present name is generally credited to the remarkable long-range views to be obtained from a point at the east end of the village. Under very favorable weather conditions, parts of seven counties can be seen — and with good field glasses the Delaware Water Gap can be sighted.

#### FRICKS

A village in southwestern Hilltown Township between Line Lexington and Leidytown. The village was named for the first postmaster.

#### HAGERSVILLE

A village on the township line between East Rockhill and Bedminster, just east of Route 313. Hagersville was named for Colonel George Hager, a prominent Upper Bucks politician, and one of its most active citizens was Samuel Hager, founder of Perkasio Borough. In early times it was a coach center with blacksmith and wheelwright shops.

#### HILLTOWN

A village in central southeastern Hilltown Township on the old Hilltown and Line Lexington Turnpike. It was a former stage coach center. In the early 1900's it was a harness track racing center with a half-mile track. Today the Hilltown Civic Association field is the center for horse shows, baseball, dog shows and township recreational functions. The Catholic Church of Our Lady of the Sacred Heart was founded here in 1919.

#### HILLTOWN TOWNSHIP

The most southern part of the Pennridge area, it is bounded on the northwest by West and East Rockhill, northeast by Bedminster, southeast by New Britain and southwest by



Modern Pennridge Airport, Features 4,000 foot Runway

## Farm & Home Oil Company

Gasoline—Fuel Oil  
Kerosene—Motor Oil—Grease  
Burner Service—Goodyear Tires

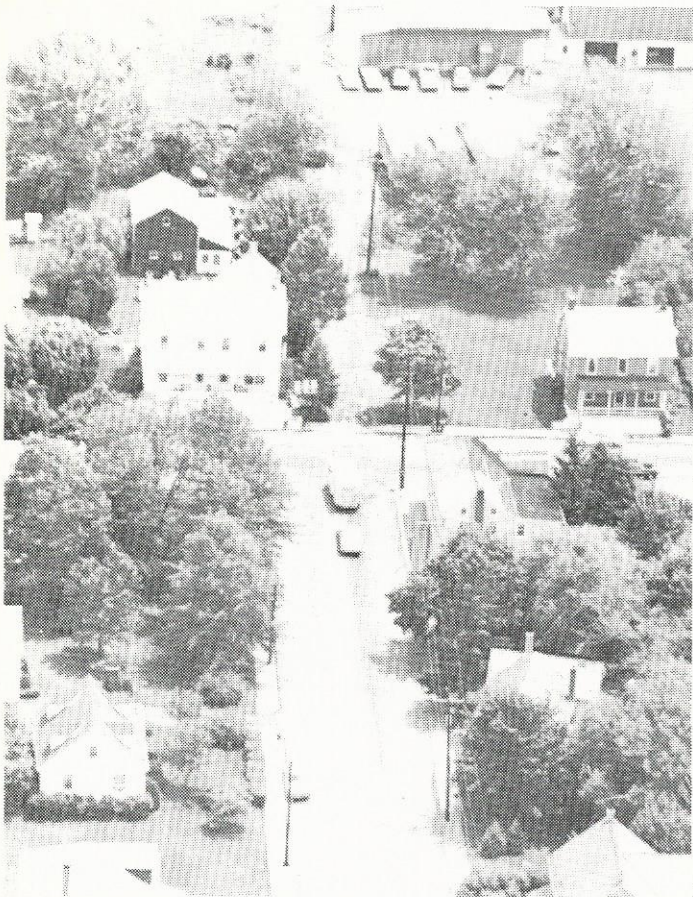
Office Address

115 Washington Ave.,

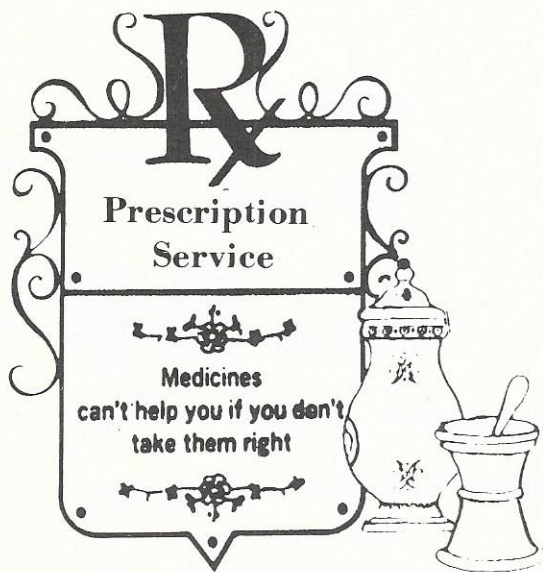
Souderton, Pa. 18964

Phone 723-5528





Aerial Photo of Quiet Silverdale Borough



**Groff Pharmacy, Inc.**

**613 Market St., Perkasia 257-4551**

Mon., Tues., Thurs., Fri. 9 a.m. to 9 p.m.

Wed. 9 a.m. to 6 p.m. — Sat. 9 a.m. to 5 p.m.

After Hours Emergency Service — 257-2948

Hatfield and Franconia Townships. Although it is uncertain, the probable date of the township's organization was 1722. Part of it was originally within the Manor of Perkasia. Hilltown Township lies on a broad ridge with an elevation of 500 to 600 feet, affording magnificent panoramic views of the lower county and the rockhills to the north. Hilltown was first settled by Welsh immigrants with the Germans coming later.

#### INGRAM HILL

This is the name given a steep hill on the Naceville-Telford road, dividing line between Bucks and Montgomery Counties in West Rockhill. A Virginian built a mansion on the charming site after the Civil War. His name was William Ingram and the incline kept his family name.

#### KEELERSVILLE

A village in the extreme northwest corner of Bedminster Township on the Old Bethlehem Road, forming the township line between Bedminster and East Rockhill, one half mile from Route 563. Tohickon Union Church was built here in 1745. It may be safely assumed that the village was named for some member of the Keeler family, although it does not appear that this family was numerous at any time in Bedminster.

#### KELLERS CHURCH

A village in northeastern Bedminster Township on the Ridge Road — Route 563 — it is one of the oldest communities north of Doylestown, the Bucks County seat. St. Matthew's Evangelical Lutheran Church, located there, is the second oldest Lutheran Church in the country, being founded in 1744 by Heinrich Keller. Rev. Henry Melchoir Muhlenberg, patriarch of the Lutheran Church in America, exercised some supervision over this congregation. The Reformed congregation joined the Lutheran in 1841.

#### KULPS CORNER

A hamlet in southwestern Bedminster Township, a short distance northwest of Dublin. The name is from the well-known Bedminster family of Kulp, spelled Kulp, Kolb, Culp, that settled here during the Revolution.

#### LEIDYTOWN

A village in Hilltown Township on the old Line Lexington and Hilltown Turnpike between Fricks and Hilltown Village. The village is named for the Leidy family.

#### LINE LEXINGTON

A village in two counties and three townships at the intersection of Route 309, County Line Road and the old Line Lexington and Hilltown Turnpike. The boundary lines of Hilltown and New Britain Townships, Bucks County, and Hatfield Township, Montgomery County, converge here. The township line is reputed to run through the village tavern. The landlord sleeps in New Britain, votes in Hilltown and while standing behind the bar in Hilltown serves drinks to the thirsty standing in New Britain.

#### NACEVILLE

A small village in West Rockhill Township on the Bucks-Montgomery County line at the intersection of Route 563 and the County Line Road. It was named for the Nase family, once numerous there.

#### PERKASIE

A borough organized in 1879 from southeastern East



Rockhill Township. The name comes from the Manor of Perkasio, a proprietary tract of 11,462 acres. Perkasio lies wholly within the bounds of this old manor. While the name has been spelled in various ways, it seems to be a corruption of the Lenape Indian word Poekskos-sing, meaning "where hickory nuts were cracked." Its municipal growth was instantaneous. The Reading Railroad, cigar-making, needle trades followed, and church growth kept pace with the expansion. A municipality always in step with the times, Perkasio outstripped most communities with an elaborate park and recreation program that augments all other phases of the borough's operation. Perkasio Park, an 18-acre resort under the supervision of the United Evangelical Church, adds to the extensive park program.

#### PERKASIE MANOR

The Manor of Perkasio was one of William Penn's several manors in Bucks County and contained 11,462 acres. The original survey embraced parts of present Hilltown and East Rockhill Townships, extending to or perhaps beyond the Richland line. This was in 1708.

#### REIFF'S CORNER

A village in northwestern Hilltown Township, a mile west of Fairhill. It occupies the slope of Dead Man's Hill, named for the steep incline and sharp curve. The location was named for the Reiff family, Swiss immigrants. Reiffs Corner is not found on maps today and only occasionally used by residents of the place but Dead Man's Curve is heard often.

#### ROCK HILL

A mountainous ridge extending across the northwestern part of East and West Rockhill Townships. It is located several miles north of Perkasio. The name Rock Hill is also applied specifically to the bold knob in northwestern East Rockhill with an elevation of 820 feet. From the point to the Bucks-Montgomery boundary line northwest of Ridge Valley there is a gradual descent in the ridge to 600 feet. It has an average breadth of a mile and a half. The origin of the name of the hill is obvious.

#### RICH HILL

A village on the lines of three townships. East and West Rockhill and Richland, several miles north of Perkasio. For many years known as Bunker Hill, the present name developed from the Richland proximity.

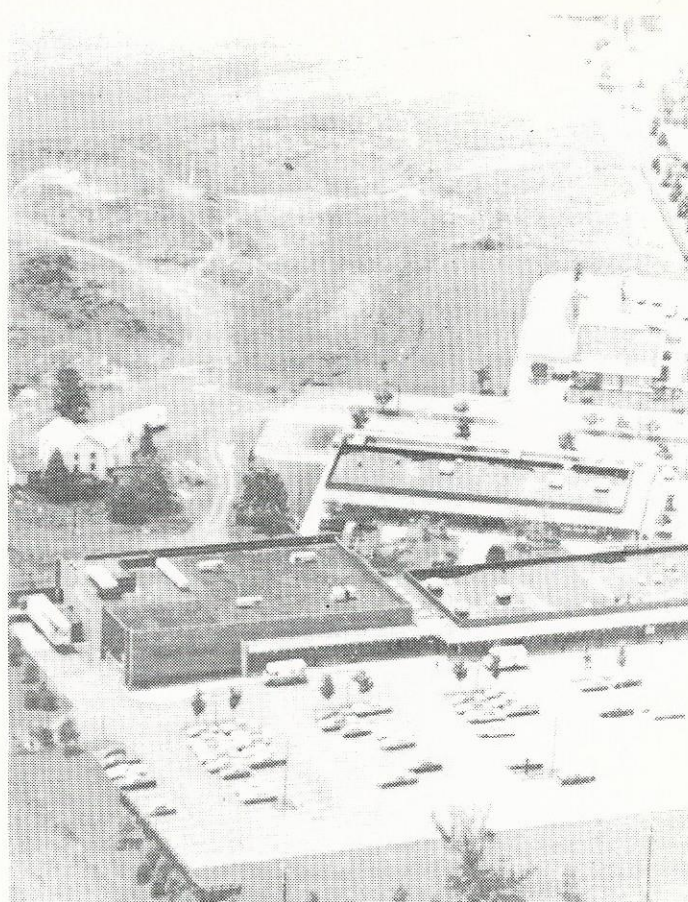
#### ROCKHILL TOWNSHIPS

This area — now East and West Rockhill Townships — is bounded by Milford and Richland Townships, northeast by Haycock and Bedminster Townships, southeast by Hilltown and southwest by the Bucks-Montgomery line, bordering on Franconia and Upper Salford Townships, Montgomery County.

The township was established in 1740 by order of the court. Before the boroughs of Sellersville, Perkasio and Telford were detached, Rockhill, with its 19,168 square acres, was the largest township in Bucks County. On May 24, 1890 Rockhill was divided into East and West Rockhill Townships. The line dividing the townships begins on the Old Bethlehem Road at Rich Hill, following the road southward to the Sellersville Borough line and ends on the Hilltown Township line, cutting the old township into two divisions of equal area.

#### ROCKY RIDGE

A village located along the Old Bethlehem Road between Sellersville and Rich Hill, on the line between the East and West Rockhill Townships. It is in the heart of the 'Rocks', thus its



Part of the Modern Shopping Center — Glen Wood



**Products Inc.**

Perkasie, Pa. 18944

World's Leading Designer  
and Manufacturer of  
Precision Rear View  
Mirror Systems





Sellersville Scout Cabin Along Lake Lenape

## Electro-Mechanical Instrument Division



## Sheller-Globe Corporation

P.O. Box 368  
Dublin, Pa. 18917

Manufacturer of  
Electrical Meters, Ammeters,  
Milliammeters, Voltmeters  
AC/DC

name. It was first called Smoketown and is still called this on occasion.

### SELLERSVILLE

A borough organized from southeastern West Rockhill Township, it was incorporated in 1874. Sellersville is a very old settlement and among the earliest settlers were Harr, Wambold, Dotterer and the Derstine families. Samuel Sellers, a Hilltown Township native, founded the borough. He as an astute businessman and politician. He established Sellers Tavern, served as Bucks County Sheriff and was elected to the Pennsylvania legislature. His remains are buried at Indian Creek Church. The first stage line through the town was established in 1742. Today the borough is on the main line between the Lehigh Valley and Philadelphia. In tune with the times, government and industry serve the people and the world. A panoramic park and playground program makes Sellersville a beautiful residential community. Sellersville marked its 100th anniversary of incorporation in 1974.

### SILVERDALE

A borough organized in 1896 from a part of Northwestern Hilltown Township, it lies on Route 113, the old Souderton and Dublin Turnpike. Its first name was Portland and the first post office was established under the name of Lawndale. The name Silverdale was adopted when it was incorporated. Completely surrounded by Hilltown Township, the community life revolves around an active fire company with a playground association launching into recreational planning.

### THOMAS CORNER

A hamlet in northwestern Hilltown Township, a mile east of Fair Hill. The Thomas family was among the first settlers of the township.

### THREE MILE RUN

A small stream, as its name indicates, rising in West Rockhill Township and following in a northeasterly direction through East Rockhill Township, it empties into the Tohickon Creek at Weisel. In colonial times it supplied power for grist and saw mills. It has borne its name since early times and the area along and around it has become known as the Three Mile Run.

### UNIONVILLE

A village on Route 309, about a mile and a half northwest of Line Lexington, partly in Hilltown Township, Bucks, and partly in Hatfield Township, Montgomery County. Once known as Hockertown, the present name is without any special significance.

### WEISEL

A village in northeastern East Rockhill Township, near the township line between East Rockhill and Bedminster, on the Bethlehem Road. It was named Weisel for the Colonial family of George Michael Weisel who emigrated from Alsace and received a grant from Thomas and William Penn — a grant of 281 acres in Bedminster Township, bordering on East Rockhill. The Nockamixon State Park

## *Municipalities of Pennridge*

**Boroughs**  
Perkasie  
Sellersville  
Silverdale  
Dublin

**Townships**  
East Rockhill  
West Rockhill  
Bedminster  
Hilltown



## Acknowledgements

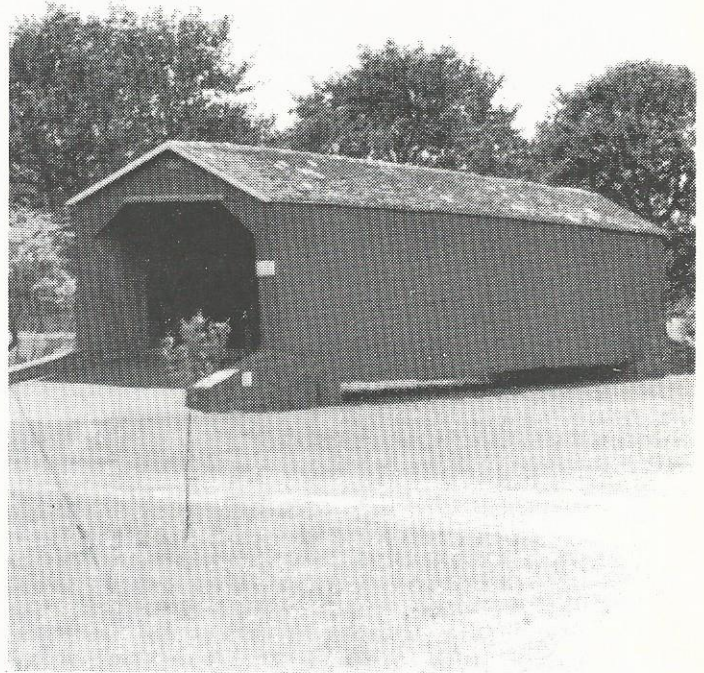
The Pennridge Chamber of Commerce presents this publication which it believes offers an overall view of the Pennridge area — its towns, schools, churches, civic groups and people.

The project was started in 1976, with production completed in early 1977. Robert L. Spaninger was chairman of the booklet committee, assisted by Chamber Executive Director Jeanette Rosenberger. Other committee members were Charles Baum, Lee Roeseler, Art Crooks, William Long, and John Cauley. James Hackett was editor.

Composition was done by the News-Herald, with most of the pictures by the paper's photographer Donald Boorse. Labelcraft Press printed the souvenir booklet.



**There's Beauty in Balance — And in a Comprehensive Sports Program**



**Local Historians Preserved Perkasio Covered Bridge**

Alcast Metals, Penn-Field Precision Machining, Inc. and Penn-Field Industries, Inc. are three manufacturing companies with common ownership and shared management.

Each company specializes in different areas, but combined, we have the facilities and the know how to cast a part, machine it, design and build a machine to assemble it to other components.

**the penn-field group**



you may find outstanding job opportunities at all pennfield locations.

**alcast metals**

BOX 188  
MONTGOMERYVILLE, PA. 18936  
(215) 368-2033

**penn-field  
industries, inc.**

317 SOUTH 7TH STREET  
PERKASIE, PA. 18944  
(215) 257-5192

**penn-field  
precision, inc.**

ROUTE 309  
SELLERSVILLE, PA. 18960  
(215) 257-5195



# *Sellersville's Grand View Hospital Serves Area*

The Grand View Hospital, located in West Rockhill Township, is a 175 bed voluntary general non-profit hospital. The institution was formally incorporated in 1916 and has undergone substantial building programs during its period of development. The Hospital serves a primary area of approximately 80,000 people that includes Pennridge and a secondary area extending into the Lansdale, Quakertown and Doylestown area. The patient distribution, which the Hospital serves, reflects approximately 55 percent Montgomery County and 45 percent Bucks County.

The Hospital offers a broad variety of inpatient services, namely medicine, surgery, pediatrics, obstetrics and gynecology, ophthalmology, orthopedics, otolaryngology, pediatric and adult allergy, dermatology, and psychiatry. In addition, the Hospital maintains an active outpatient emergency service, and is reinforced with a number of diagnostic and treatment facilities for both in-patients and outpatients.

The Radiology Department with five diagnostic and radiology rooms also contains a Cobalt Therapy facility which is currently treating 150 patients per year. In addition, there is an electrocardiography laboratory as well as services for electroencephalography, electroshock therapy, electromyography, respiratory therapy, Nuclear Medicine, Physical Therapy, and a Social Service Department.

The Hospital Laboratory is one of the largest diagnostic services within the Hospital. A full range of diagnostic facilities are provided within this service.

There are a number of ongoing programs to minimize hospital utilization. A short procedure unit was established four years ago which enables a patient to be admitted for less than a

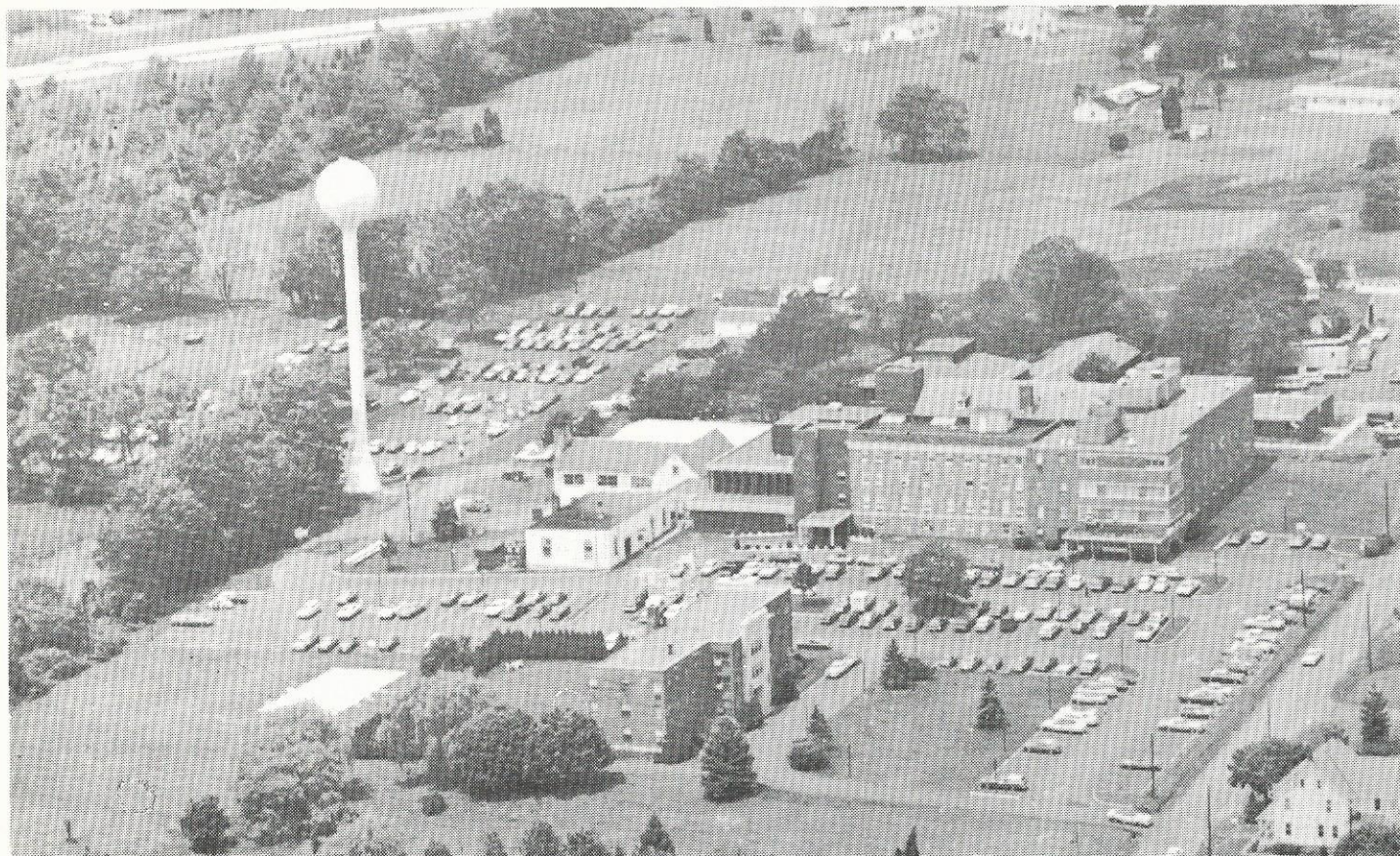
24-hour period during which minor surgical or medical procedures are carried out without the need for an overnight stay. Pre-admission testing is a standard procedure, while an active utilization review program with representation by Staff, Board Members and Hospital personnel help to maintain the length of stay at 8.0 days per admission.

In August of 1970, Grand View completed a two year building program which included a 20-bed Skilled Nursing Facility, a 19 bed Pediatrics unit and new and expanded Radiology, Dietary, Central Service, and Laboratory departments. Early in 1974, the hospital began a 3 phase building program which is still in process.

By the end of 1976, the hospital will have a new 20 bed "step down" Medical-Surgical unit, a new ICU-CCU, and a new Emergency suite. Concurrent with these developments, internal improvements on existing facilities will take place, bringing Grand View to approximately a 200 bed institution.

Grand View maintains a Career Ladder School of Nursing which has been in operation for three and one half years. The program is a project which is jointly underwritten by the Bucks County Intermediate Unit 22, an arm of the Department of Education, and by the Grand View Hospital. Approximately thirty students are enrolled in a one year class of instruction leading to eligibility to sit for the State Board of Nurse Examiners as a Registered Nurse.

The Hospital has acquired a number of connecting parcels of land during the past several years and now holds 46 acres of ground in one solid block. The Hospital site occupies an area on the East side of the total acreage facing Lawn Avenue in West Rockhill Township. There is ready access to all four sides of the total Hospital property. In addition, there is a main exit off the 309 Expressway a sixteenth of a mile from the Hospital grounds.



**Sellersville's Grand View Hospital is a Renowned Institution Set on 46 Expandable Acres**



## Local, County, State Parks

Pennridge's elaborate park and open space program is augmented by a tremendous total of 7181 acres in county and state parks within or near the Pennridge townships' borders.

Weisel Park, incorporating a youth hostel, which is the only county-operated hostel in the country, is 315 acres in East Rockhill Township. Tohickon County Park, east of Bedminster, totals 270 acres with 45 acres in development. Ringing Rocks County Park, northeast of Bedminster Township, is a 7-acre installation while Tincum County Park, along the river road covers 126 acres.

### Nockamixon State Park

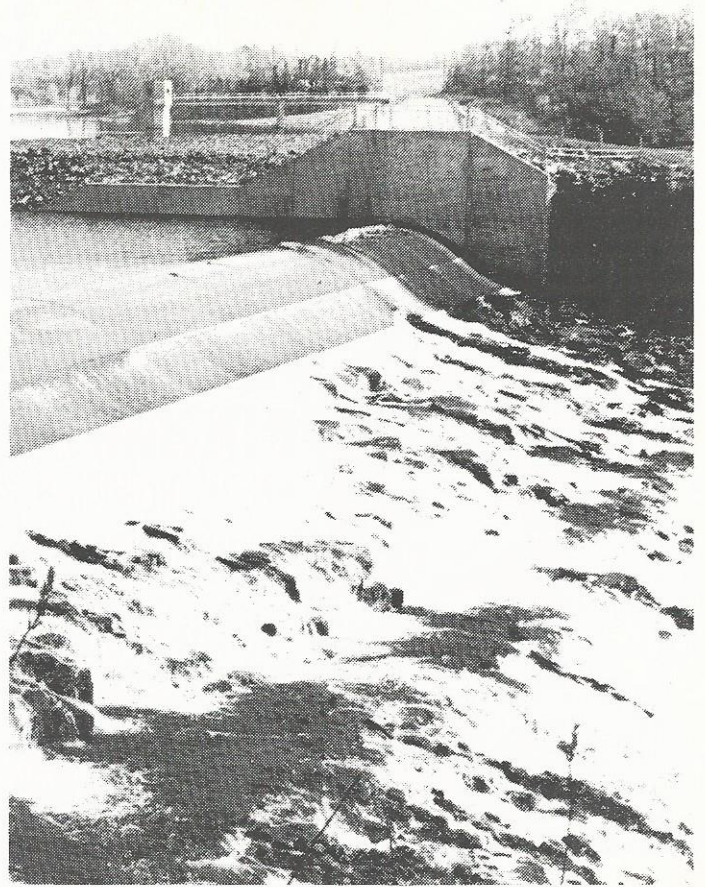
Already abounding with open space in the boroughs and townships, the Pennridge area benefits from the presence of the Nockamixon State Park. The 5000 acre recreation and water supply dam lays in East Rockhill and Bedminster Townships of the Pennridge area and in adjacent Haycock and Nockamixon Townships.

The water of the Tohickon Creek is impounded. The dam is located one mile west of Ottsville where Haycock Run meets the Tohickon at the Bedminster-Nockamixon line, and approximately ten miles upstream from the Delaware River.

The dam is of earth and rock fill and reaches a height of 95 feet and is about 1000 feet long. An emergency spillway has been cut into solid rock along the right bank of the creek.

Fourteen hundred acres are under water, producing a volume of 41,000 acre-feet of water which provides water in the billions of gallons for recreation and future area necessity.

The regional park office is located in East Rockhill at Weisel. A beach, marina, boating, day-use, day-camp and conservation areas are provided in the park.



The Dam Wall at Nockamixon State Park

## J. Richard Fretz, Inc.

Realtor

Route 313 at 113 Dublin, Pa. 18917

215-249-3128

Member of two multiple listing services of Central and Upper Bucks County.

For friendly, courteous and reliable Real Estate service, consult us for all your needs.

## Lake House Inn

on Lake Nockamion  
Weisel, Pa.

Gracious Dining in a Nautical Atmosphere

Fine Wines From the Smugglers Cellar

### HOURS

Tues. thru Sat. from 11:30  
Open Sunday 4 to 8

TRAVEL THE CONTINENTS  
WITH OUR WEEKDAY SPECIALS

Reservations: 257-9954



Ron and Arlene DuBree your Hosts



# Big Bet



**PET FOOD  
DINNERS**  
BEEF/LIVER/CHICKEN

Chopped or Chunk

6½/14½/25 oz. cans

Division of



**DEEP RUN**

PACKING COMPANY, INC

DUBLIN, BUCKS COUNTY, PA. 18917 (215)249-3543

**Reese's Garage, Inc.**

120 E. Main St.

Silverdale, Pa.

**FIAT**

**Sales and Service**

## *Pennridge High School*

The fact that over fifty percent of the high school graduates in Bucks County go on to higher education signifies the quality of courses offered to the county students. Pennridge High School meets the challenge of preparing its students for the future by offering courses suited to the individual students and making certain that each student is enrolled in the proper course through guidance and counseling.

Pennridge offers six courses — Academic (College preparatory courses such as English, History, Biology, Higher Mathematics); Business (Typing, Stenography, Business Mathematics, Accounting and Office Practice); General (Basic Sciences, General Mathematics, Social Studies); Industrial Arts (students receive courses both at the high school as well as selected courses at the technical school) and Vocational (specific courses are offered to students seeking higher education in a particular field and to those still deciding upon a vocation).

Special education classes are available to the educable mentally retarded (kindergarten through 12th grade). At the high school level, students are placed in Occupational Educational Classes. These students spend half their day at the high school and half at the technical school training for post graduate jobs.

Bucks County provides training for the mentally trainable, funded by the county but taught in the local schools. Whenever possible, all of these children are mainstreamed back into the regular classrooms.

Pennridge also presents a program of excellent courses for students qualifying.

The High School offers a wide variety of extra-curricular activities including a musical program of choirs, band, orchestra, majorettes, colorguard and several ensembles. Service and hobby clubs are also available to all students. Publications of a yearbook, magazine and newspapers afford an avenue for students interested in writing.

Pennridge has a varied sports program for all seasons of the year and for both girls and boys. School opens with football, soccer, hockey and cross country. With the winter months, the gymnasiums are busy with basketball, wrestling, gymnastics and track competitions and the spring season finds interested students participating in baseball, softball, track, tennis, golf and lacrosse. Many of these activities need trained and enthusiastic cheerleaders to promote sportsmanship and participation and training is also provided for those interested in this activity.

The local school district was consolidated in 1954, and a new high school opened in 1975. There are two junior high schools, South and Central, and eight elementary buildings in the district. They include Third Street and Seventh Street in Perkasié, J. M. Grasse and M. M. Seylar in Hilltown township, and buildings in West and East Rockhill (Deibler School), Sellersville and Bedminster.

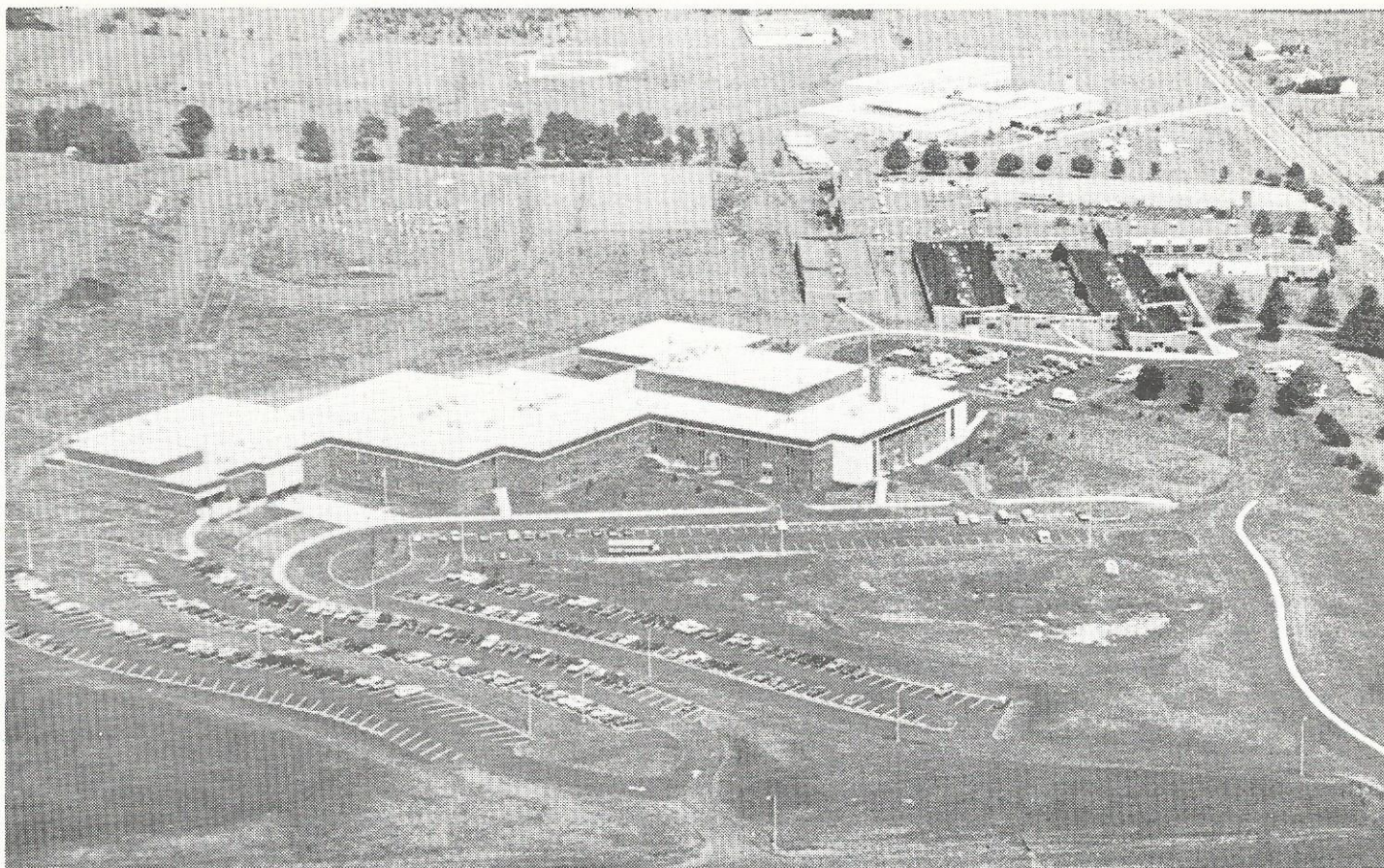
A number of church-related private schools are also available in the immediate area. Colleges in the immediate vicinity of the county include Bucks County Community College and Delaware Valley College in Doylestown.

### **UPPER BUCKS TECHNICAL HIGH SCHOOL**

The Upper Bucks Technical High School is located in Bedminster Township. This school serves the Pennridge, Quakertown and Palisades School Districts, preparing students with newly-acquired skills for use in industry and in community life immediately after graduation.

Among the courses offered are: Food Preparation; Distributive Education (Marketing & Retail Selling); Deisel Mechanics; Electronic Technology; Cabinet Making; Health





The Pennridge School Complex with its Modern Open Space High School in the Foreground

# NEWS-HERALD

A Consolidation of the Perkasio "Central News" and the Sellersville Herald

PRINTERS - PUBLISHERS

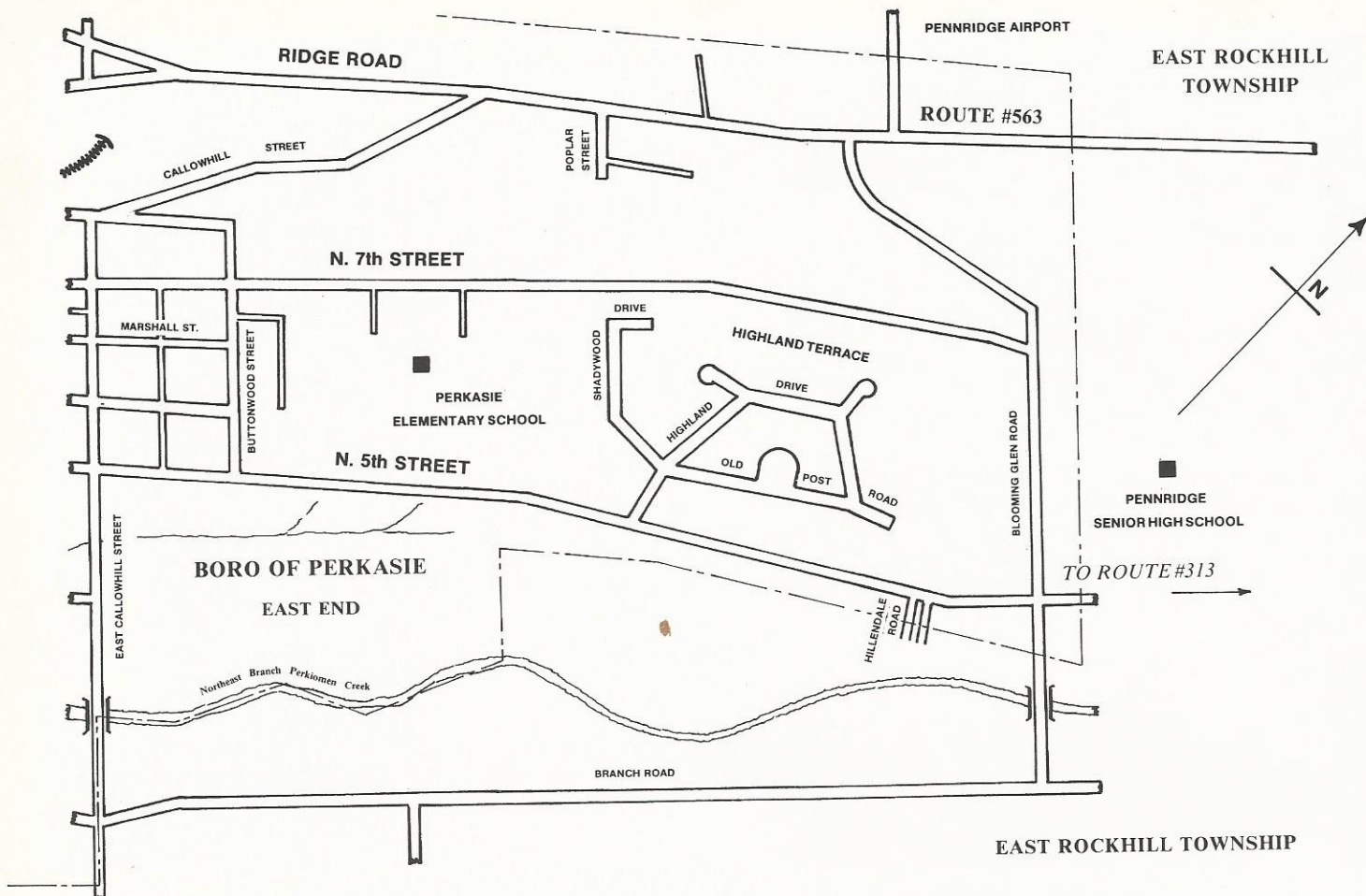
THE PENNRIDGE AREA'S  
NEWSPAPER SINCE 1881.

\*Commercial Job Printing\*

320 So. 7th St., Perkasio  
dial 257-6839







# McKEEVER-EGAN INSURANCE INC.

"YOUR LOCAL AGENCY FOR OVER 40 YEARS"

**Complete INSURANCE Service**



**257-4616**

**257-7879**

PERKASIE



TO ROUTE #309  
BY PASS

ROUTE #309  
TO SELLERSVILLE  
OLD ROUTE #309

RIDGE

EAST ROCKHILL TOWNSHIP

ROAD

BENNER AVE

ROUTE #563

TUNNEL ROAD

TO SELLERSVILLE

SOUTH

NINTH ST

ST

CONRAIL SYSTEM

S. 8TH ST

PINE ST

S. EIGHTH ST

N. ARCH ST

N. EIGHTH ST

N. 10TH ST

VINE ST

Sellersville Boro

EAST CHURCH STREET

SOUTH

FIFTH ST

STREET

SOUTH

SIXTH ST

ST

SEVENTH ST

ST

STREET

R.R. Station

S. 5TH ST

ST

PENN ST

ST

ST

ST

ST

ST

ST

ST

ST

ST

ST

ST

ST

ST

ST

ST

ST

ST

ST

ST

ST

ST

ST

ST

ST

ST

ST

TO SELLERSVILLE

SOUTH

ST

ST

ST

ST

ST

ST

ST

ST

ST

ST

ST

ST

ST

ST

ST

ST

ST

ST

ST

ST

ST

ST

ST

ST

ST

ST

ST

ST

ST

ST

ST

ST

ST

ST

ST

ST

ST

ST

ST

ST

ST

LAKE LENAPE PARKWAY

Menlo

Swimming Pool

ST

ST

ST

ST

ST

ST

ST

ST

ST

ST

ST

ST

ST

ST

ST

ST

ST

ST

ST

ST

ST

ST

ST

ST

ST

ST

ST

ST

ST

ST

ST

ST

ST

ST

LAKE LENAPE PARKWAY

N.E. Branch

Pathway

ST

ST

ST

ST

ST

ST

ST

ST

ST

ST

ST

ST

ST

ST

ST

ST

ST

ST

ST

ST

ST

ST

ST

ST

ST

ST

ST

ST

ST

ST

ST

ST

ST

ST

TO SELLERSVILLE

SOUTH

ST

ST

ST

ST

ST

ST

ST

ST

ST

ST

ST

ST

ST

ST

ST

ST

ST

ST

ST

ST

ST

ST

ST

ST

ST

ST

ST

ST

ST

ST

ST

ST

ST

ST

ST

ST

ST

ST

ST

ST

ST

ROUTE #152

CONSTITUTION AVE.

ST

ST

ST

ST

ST

ST

ST

ST

ST

ST

ST

ST

ST

ST

ST

ST

ST

ST

ST

ST

ST

ST

ST

ST

ST

ST

ST

ST

ST

ST

ST

ST

ST

ST

GRANDVIEW AVE

ST

ST

ST

ST

ST

ST

ST

ST

ST

ST

ST

ST

ST

ST

ST

ST

ST

ST

ST

ST

ST

ST

ST

ST

ST

ST

ST

ST

ST

ST

ST

ST

ST

ST

ST

ST

ST

SUMMIT AVE

ST

ST

ST

ST

ST

ST

ST

ST

ST

ST

ST

ST

ST

ST

ST

ST

ST

ST

ST

ST

ST

ST

ST

ST

ST

ST

ST

ST

ST

ST

ST

ST

ST

ST

ST

WALNUT STREET

ST

ST

ST

ST

ST

ST

ST

ST

ST

ST

ST

ST

ST

ST

ST

ST

ST

ST

ST

ST

ST

ST

ST

ST

ST

ST

ST

ST



563 TO UPPER PERKIOMEN

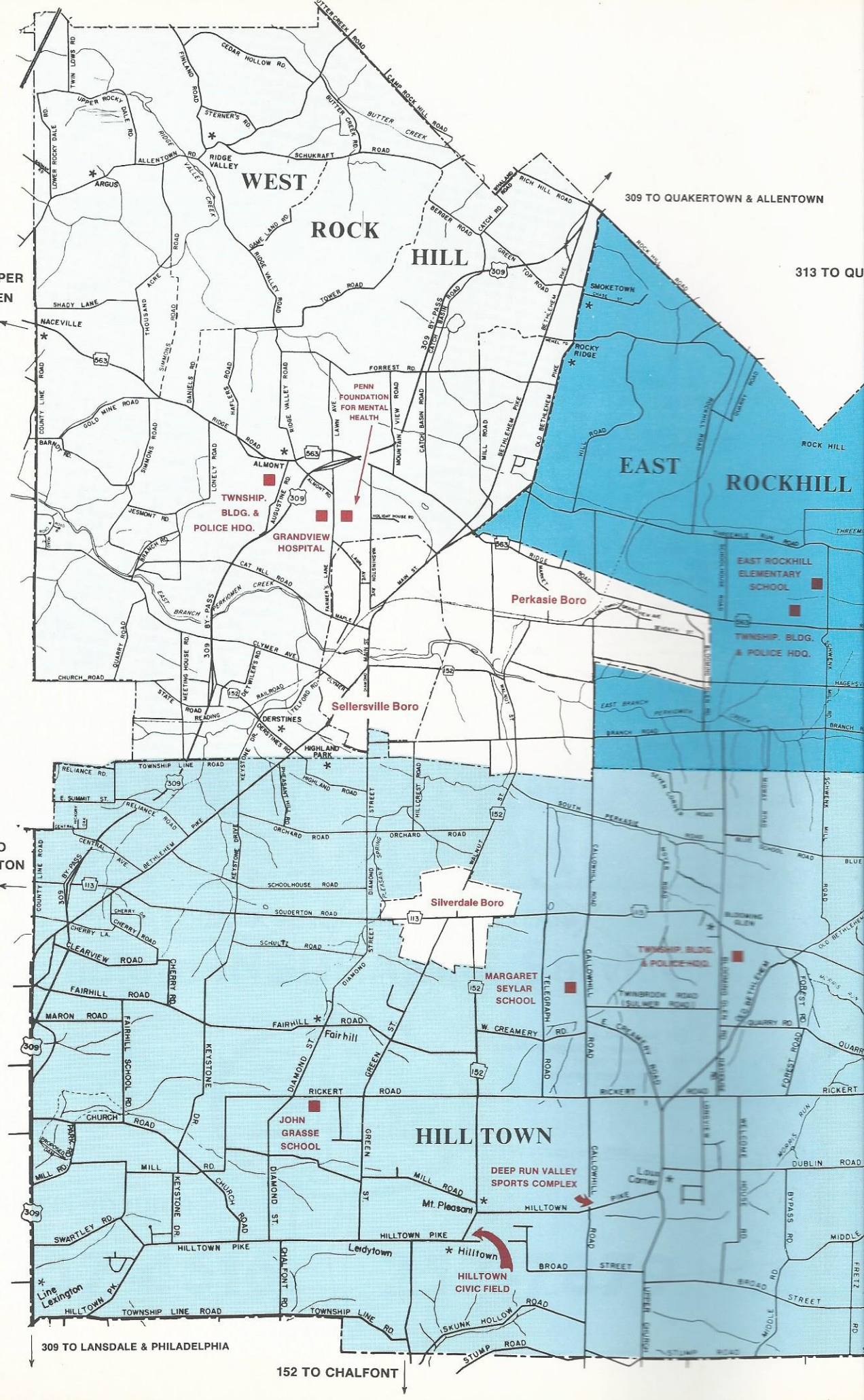
309 TO QUAKERTOWN & ALLENTOWN

313 TO QUAKERTOWN

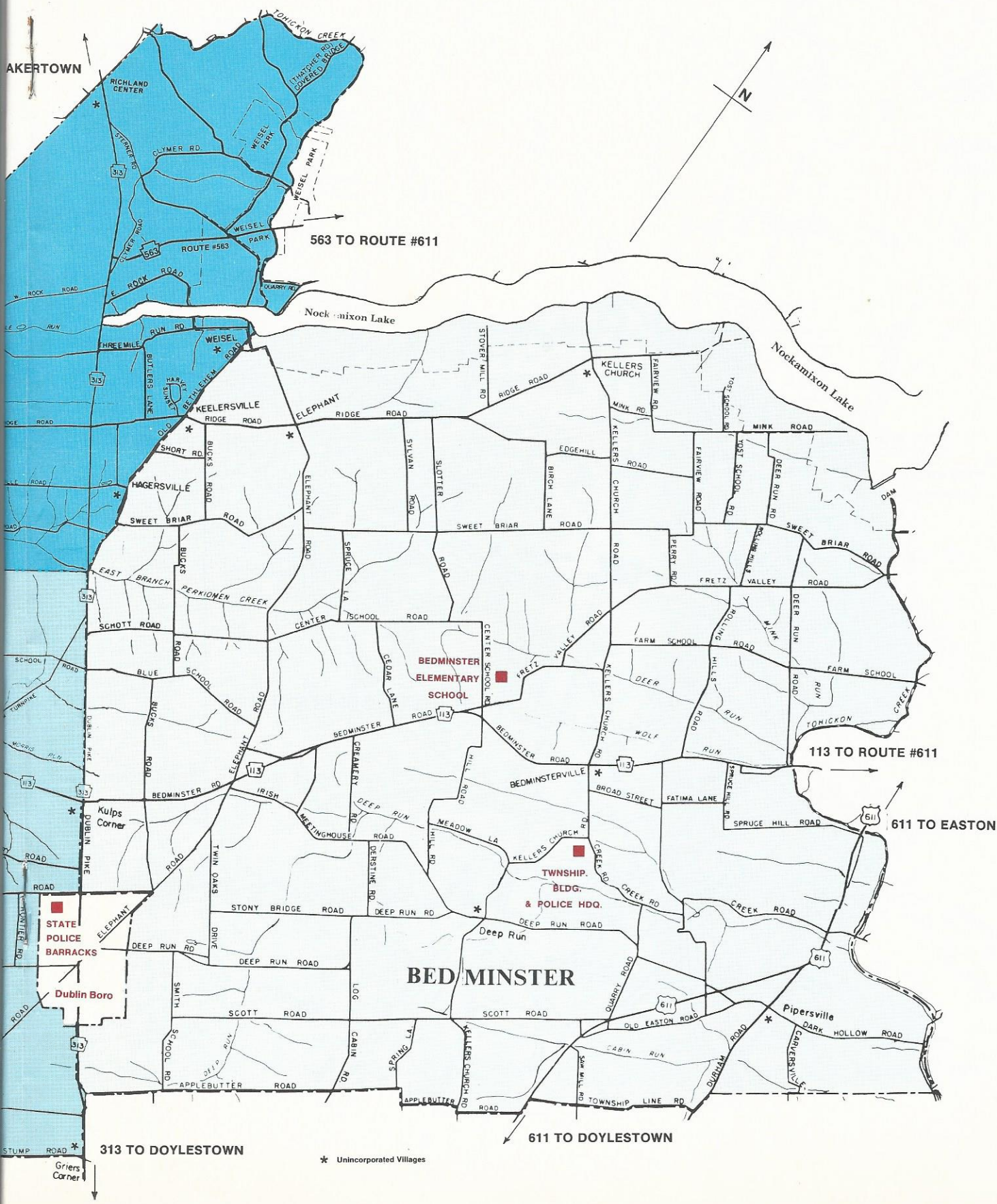
113 TO SOUDERTON

309 TO LANSDALE & PHILADELPHIA

152 TO CHALFONT







AKERTOWN

563 TO ROUTE #611

113 TO ROUTE #611

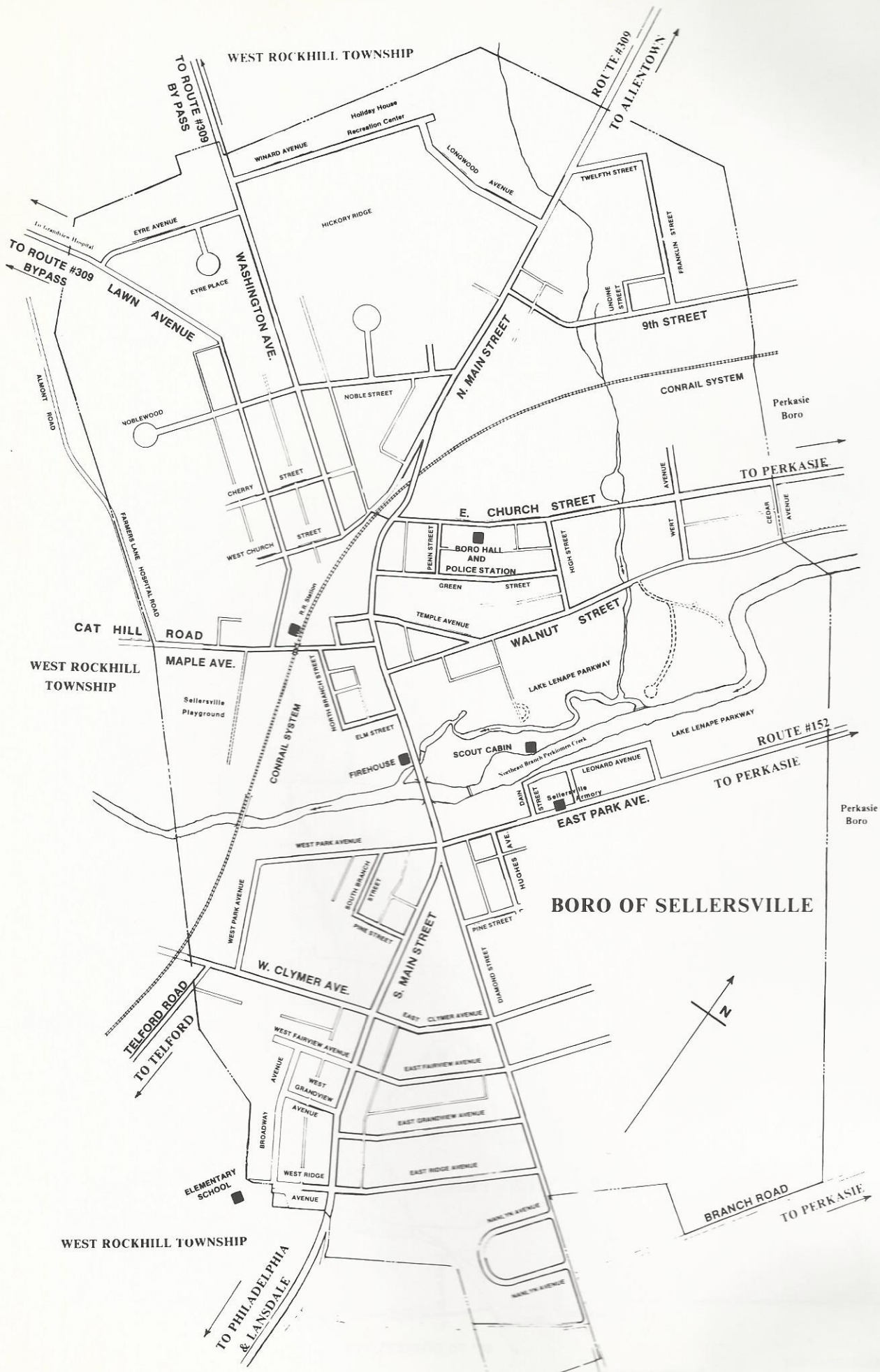
611 TO EASTON

611 TO DOYLESTOWN

313 TO DOYLESTOWN

\* Unincorporated Villages

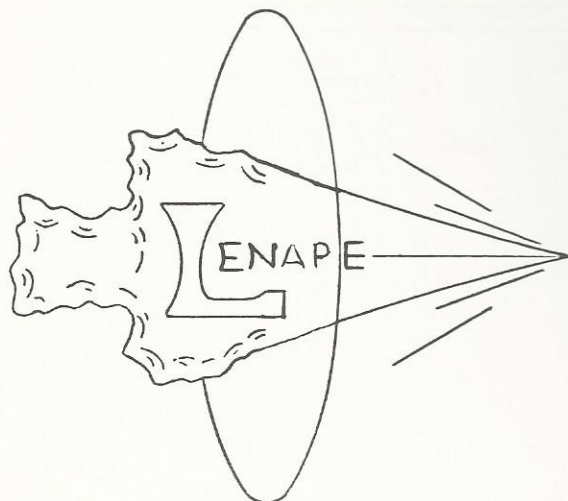












**Lenape Mfg. Corp.**  
**Aircraft Components**  
**& Assemblies**  
**Machining — Tools & Dies**  
**Design Service**

1803 5th St.,  
 Perkasia, Pa. 18944  
 (215) 257-5101

**Did you know that**  
**Perkasie is the**  
**Rack Capitol**  
**of the World?**

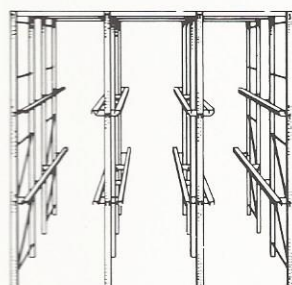
Did you know that the Warehouse Storage Systems Company right here in Perkasia has made enough racks to store everything in Perkasia . . . furniture, dogs, cats, cars, kitchen sinks . . . everything? In fact, our storage racks are in use throughout the country and they happen to be the best in the world.

Sure, Boston is known for its beans; Baltimore for crabcakes; Milwaukee for its beer; and Memphis for its country music. But outside of industry, not too many people realize that Perkasia, Pennsylvania is the rack capital of the world . . . racks for furniture chains, food chains, even tire chains.

So rack up a big score for Perkasia and Warehouse Storage Systems Company . . . the company that is helping all industry get its products off the ground.



Warehouse Storage  
 Systems Co.  
 DIV. SEIZ CORP.  
 PENNRIDGE  
 IND. PARK  
 PERKASIE  
 PA.



**WAREHOUSE STORAGE SYSTEMS COMPANY**

Division of Seiz Corporation

Hi Line Drive and East Ridge Road, Pennridge Industrial Park,  
 Perkasia, Pa. 18944 • Tel: (215) 257-3601

Assistance; Welding; Agriculture; Aviation Maintenance; Electronic Data Processing; Auto Mechanics; Occupational-Transitional; Warehousing; Machine Shop; Masonry; Appliance Repair; Design Technology and Drafting; Cosmetology; Horticulture; Printing; Carpentry; Auto Body; Heating; Air Conditioning and Plumbing; Chemical Technology; Baking and Mathematics. The school also offers many of the same courses in an evening program open to the community.

**PUBLIC SAFETY AND PROTECTION**

Police and Fire protection in the Pennridge area has a regional look and the highest record of harmony, cooperation and assistance that could ever be expected in eight political subdivisions.

While each component of Pennridge area has a separate police force, all departments are part of the Bucks County Police radio system and maintain a 24-hour answering service.

The Pennsylvania State Police are barracked on Rickerts Road in Dublin and provide schools that are attended by the Pennridge police officers. The Federal Bureau of Investigation regularly invites area police to their schools.

The Bucks County Police Association grove is located in Bedminster Township. Regular training and recreation programs are carried on at this beautiful location.

Traffic toll and juvenile delinquency is low and the crime rate is in the same low category in comparison to national trends.

In the Pennridge area there are 8 police chiefs who are the principal officers in each department of the 8 Pennridge political sub-divisions. The combined departments provide 28 full-time police officers and 15 part-time members of the department in various capacities. In addition, during high impact periods, the Fire Police Departments of the four Pennridge Fire Companies provide services in traffic and other control duties.

Fire Equipment and Property Worth \$1,650,000 is one of the proudest points of service in Pennridge of the four fire companies. Holding an annual joint dinner meeting in which each company rotates the host role, maintaining standbys for each other, and keeping fire loss minimal in a side-by-side effort in the four Pennridge townships, the four borough volunteer fire departments are the epitome of neighborliness that exists in Pennridge.

Dublin, Perkasia, Sellersville and Silverdale Companies have more than 300 active firemen on their roles, over 200 active ladies' auxiliary members and own 22 pieces of fire fighting equipment, including Perkasia's scope ladder, for use under all conditions peculiar to this local.

The four companies occupy structures valued at \$800,000 and adjacent ground appraised at \$500,000. The apparatus has a replacement value of \$800,000. Two fire company ambulance services — Dublin and Perkasia — provide ultra-modern community service with equipment valued in excess of \$100,000. All other equipment for the trucks and men have a sound value of \$250,000.

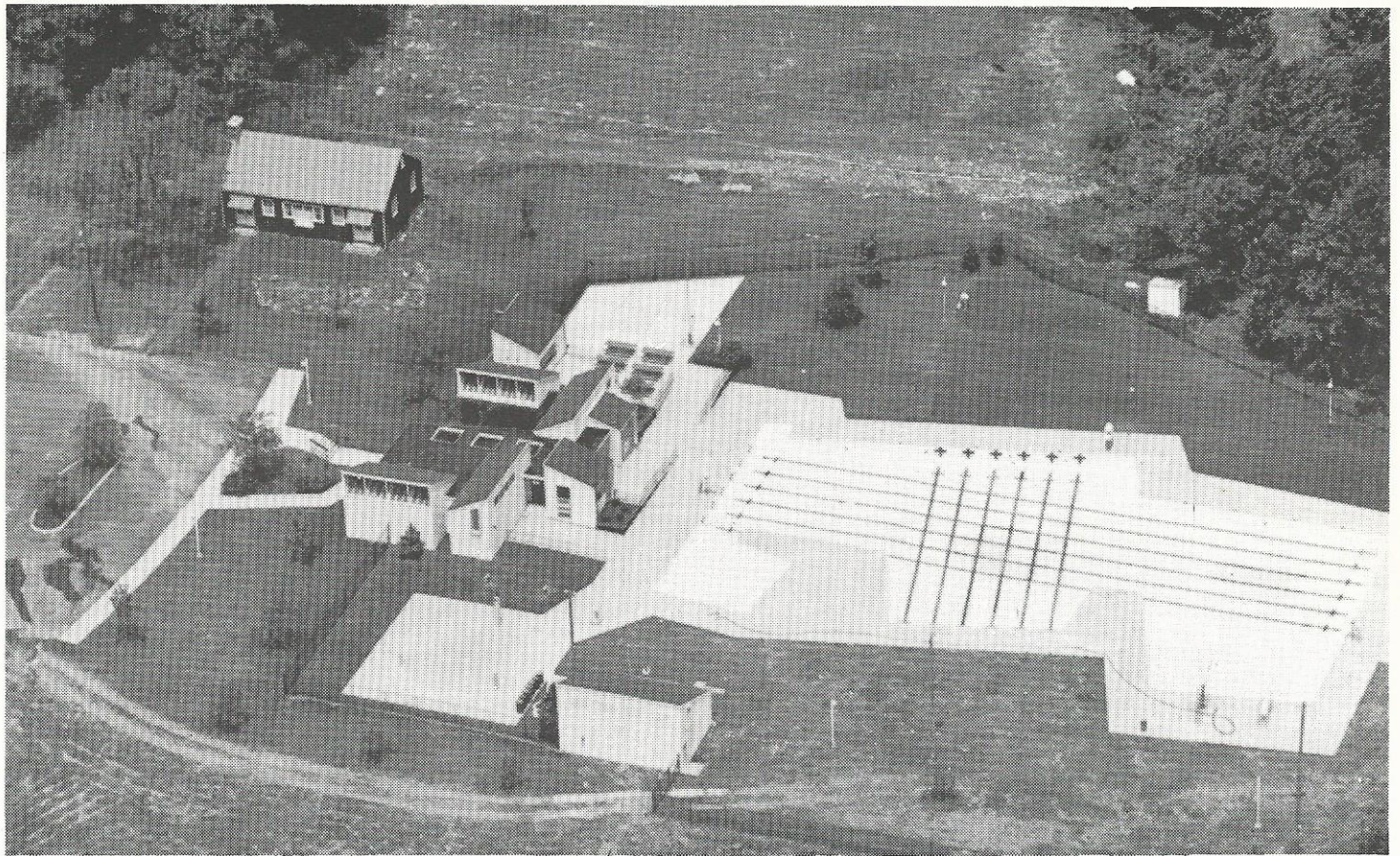
Most of this equity has been provided by the volunteers with little cost to local government. The companies and the auxiliaries invite queries for membership from qualified and dedicated citizens.

In any event these companies are equipped with the latest and finest equipment, and staffed by citizens who spend endless hours in updating techniques to protect life and property.

One of the finest points about the companies is the camaraderie that is practiced among all of them. A need of great magnitude in any one section draws immediate help from everyone, including active assistance and coverage for those areas fully activated.

Companies are located in such a strategic fashion that every borough and township is well covered for any eventuality.





Sellersville - West Rockhill Joint Recreation Authority's Holiday House Olympic Size Pool



## BLUEPRINT FOR **PROGRESS**

### Let's All Get Together!

There is strength in numbers, and we point with pride to what the people of our community have achieved working hand in hand. Much has been done, and much more will be done to realize the full potential of community progress. Our personal blueprint blossoms with ideas and plans for working with you and for serving you, as we start into the 70's together.

**ECKERT and MALONE, Inc.**

Sellersville, Pa.



## Dublin Diner and Restaurant

Jack & Dorothy Evans, prop.

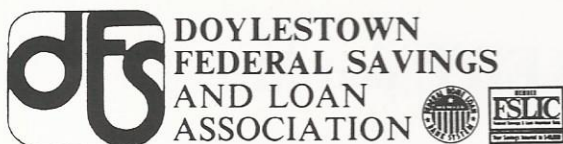
Main Street, Dublin

249-3686

## Have we got your attention?

We're on North Main Street in Dublin.  
Lots of free parking. Wonderful people.  
5.25% interest rate on regular savings,  
compounded daily to yield 5.47% annually.  
Your account insured to \$40,000.

In short — we offer you everything.  
And we want you to know it. And we want  
you to save with us.



DOYLESTOWN — Monument Square  
CROSS KEYS — Route 611 • DUBLIN — North Main Street

## Churches Abundant

From the tall spires of Lutheran and United Church of Christ bell towers to the simple, unadorned lines of Baptist and Mennonite worship centers, more than thirty-five Pennridge town and country churches represent a people who acknowledge one Lord over all.

Patterned by the criss-crossing of denominational strands, the Christian faith has been threaded into a strongly-knit fabric of community life. For families of the Pennridge area, church membership is more than a status symbol. It speaks of the serious concern for spiritual values that has stamped the character of Pennridge citizenry and toughened its moral fibre for more than two centuries since early settlers first erected their rough hewn log churches in the cleared spaces of Bucks County.

Deep rootage in a strong religious heritage has not stifled a sense of aliveness to the present. Among clergy and members alike, there is progressive effort to bring the creative power and love of Christian faith to bear on contemporary life. Ministers and Christian laymen work hand-in-hand with community educators to cope with moral issues facing twentieth-century youth. The community hospital is served by a daily chaplaincy program involving twenty-five area pastors. The local mental health foundation sponsors periodic seminars for clergymen and makes possible a professional-religious team approach to the emotional health needs of individuals and families. A center for senior citizens has been given active pastoral support. Recent construction of new or expanded facilities by many area churches demonstrates the attention being focused on various forms of religious education. Even local newspaper editorials do not find it strange to speak positively concerning the faith of Jesus Christ and its relation to the Pennridge climate of life.

The denominational spread of churches provides for a variety of religious expression that enables Christian families to find a church that speaks "home" to their respective convictions. At the same time a trustful sense of brotherhood is symbolized by united experiences such as the annual three-hour Good Friday union service. Marks of a religious caste system besetting some communities is conspicuous by its comparative absence in Pennridge circles.

Pennridge churches, however, are not blissfully unaware of the erosion of moral and spiritual life taking its toll on the American scene today. Nor have they overlooked the danger that a community's religion may become merely a passive agency for dispensing blessing on the status quo of middleclass suburbia. The task of bringing into the heart of a community a growing sense of purpose beyond itself carries an inexhaustible challenge to men and women of vision and faith. The deep-felt needs of mankind, whether next door or overseas, can ultimately be ministered to only through the unchanging love of God. To this end, the churches of Pennridge have dedicated themselves and invite the whole-hearted involvement of all families.

The nearest synagogue is within a few minutes of Pennridge.

There are denominations of all sorts, from Roman Catholic to Episcopalian, Methodist to Presbyterian, and many independent religious groups.

## Senior Citizens Center

One of the most active spots in the Pennridge complex is the Retired and Senior Citizens Center of Upper Bucks County at 815 Chestnut Street, Perkasio.

'Golden Agers' enjoy a home of their own. Programs that meet every interest are formed. Funds are provided by the county and United Fund and area unions have been very active in establishing and expanding this successful experiment in retirement living.





Community Carnivals and Bazaars Reach Their Zenith in the Grand View Hospital Lawn Fete

## When Buying a Horse Trailer...



## REMEMBER...

One stands out. Hartman was first in the field 40 years ago . . . and retains that position today.

Your horse is surrounded in safety and comfort through the quality built into a Hartman Trailer.

Quality aptly applies the high degree of excellence attained in every manufacturing feature.

Before investing in just any horse trailer, invest in a communication with Hartman. Write or call for brochures and the name of the dealer nearest you.

**HARTMAN TRAILER  
MFG. CO., INC.**

7 WALNUT STREET  
PERKASIE, PENNA. 18944  
TEL. (215) 257-6556



215-257-4613 or 257-2966

Distributors Of  
Purina—Wayne—Beacon Feeds

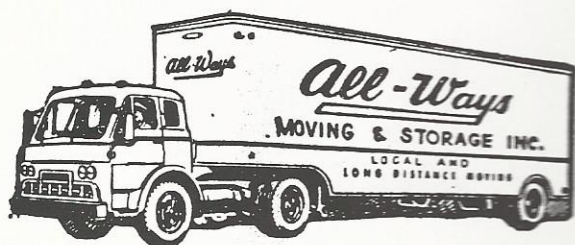
**Stover Feed  
Company**  
Feed, Grain, Fertilizer, Seeds

Ken-L-Biscuit — Wayne  
Purina Foods

**All-Ways Moving  
& Storage, Inc.**

9th & Market Sts., Perkasio  
257-3360 — 536-5078

Local—Long Distance  
Agent for Bekin's Van Lines  
Packing — Crating



**Service Clubs**

Many advances in the Pennridge area are directly attributable to the warmth, action and concern exhibited by the service clubs — women's and men's.

Perkasie Rotary Club is the oldest service club in the area. There are five Lions charters — Dublin, East Rockhill, Hilltown, Perkasie and Sellersville.

The Woman's Club of Perkasie, Business and Professional Women, the Soroptimists, and the auxiliaries of the fire companies and veterans organizations offer ample opportunity for women's community service.

There is also an active Jaycee and Jaycette chapter in the Pennridge area, along with many private social clubs such as the Legion, VFW, Owls, Moose and others.

**Lake Lenape Parkway**

Perkasie and Sellersville Boroughs support one of the most extensive, passive and active recreational park systems in the Commonwealth of Pennsylvania, in relation to population. The passive area, which incorporates active projects too, covers one hundred twenty-five acres (eighty-five are in Sellersville Borough and forty in Perkasie). The combined borough lands offer an expanse from Route 309 east to Market Street in Perkasie.

In addition to picnic facilities, the parkland that is threaded by the northeast branch of the Perkiomen Creek offers hiking, softball, boating, fishing, trapping and ice skating in winter and an individual outlet all year round for anyone enjoying bird watching or plain lolling in the tree-lined manicured area.

Perkasie Borough also maintains a six acre playground at Second and Market Streets, complete with wading pool and play facilities for tots. A lighted baseball and softball field with an outstanding grandstand for spectators is the focal point of the area and the facility is complete with lighted all weather tennis and basketball courts.

Sellersville playground, a seven acre tract, is known as the B. Earl Druckenmiller Playground. A fine baseball field, excellent play equipment, two wading pools and three lighted tennis courts are used constantly in season.

**Swimming Pools Galore**

There is hardly a place in America, according to veteran commercial swimming pool builders, that can match the expansiveness and beauty of the pools that are found in Pennridge.

In Pennridge, Perkasie Borough and the Sellersville — West Rockhill — Holiday House Recreation Area operate municipal pools. All residents of the Pennridge area are eligible for membership. Silverdale Recreation Association and several Hilltown groups have expressed interest in building pools in their localities in the future.

The Perkasie Borough installation, known as Menlo Pool, features a facility that contains 400,000 gallons of water with an ultra-modern filtration system, bathhouse and lounging area. The site covers two acres.

The Sellersville Borough — West Rockhill Township pool is an olympic size facility with a 500,000 gallon capacity. The pool is located on a 15½ acre tract at the border of the participating municipalities and extensive future planning includes youth recreation facilities, picnic areas and tennis courts.

Boys and girls of the Pennridge area in categories from 7 and under to 17 and under are invited to participate in a competitive summer swimming league. The Perkasie and Sellersville-West Rockhill pools field one team in the Bux-Mont Municipal Swimming League. The league is comprised of teams from neighboring suburban boroughs and townships.





**Perkasie's Municipal Pool is a Popular Spot for All Ages on Summer Days**

# **North Penn Oil & Tire Co.**

**135 N. 9th Street, Perkasie**

**257-2736**

**A Pennridge Name for Service, Integrity, Quality**



## Penn Foundation

Penn Foundation, located across the street from Grand View Hospital in West Rockhill Township, near the Sellersville Borough line, has reached the maturity of a fully rounded program. In addition to interview and other forms of therapy for adults, group therapy, psychological testing and social work with the patient's family is included.

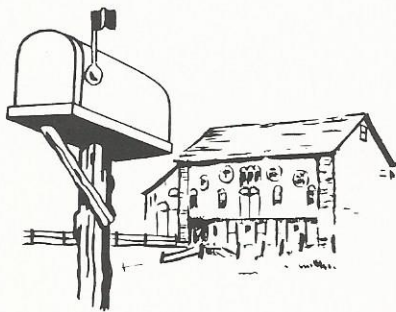
Child psychiatry is important today and specialists in this field are on the staff. The newest in modern electric treatment and special arrangements for in-patient care have been established with Grand View.

As a pioneer in the day care field, Penn Foundation has enjoyed remarkable results from this method of treatment. Competent personnel administer a work and recreational program during the day at the Foundation.

While the community has a pardonable pride in the Foundation — plaudits pour in from across the country. Typical is this one from The National Observer, published by Dow Jones and Company, Inc.

"More knowledge, more effective help, were prominent among the objectives of the late President Kennedy when he spoke, in a message to Congress early in 1963, on returning 'mental-health care to the mainstream of American medicine'...

"But even before Mr. Kennedy spoke, articulating the felt needs of the nation's psychiatric leaders, several existing institutions had anticipated the new concept and subsequently took it for a guide to their development. One of the best of these is the Penn Foundation for Mental Health in Sellersville, Pa."



ROY S.  
**Landis** INC.  
**REAL ESTATE**

Office • Route 313, Dublin, Pa. 18917

Phone (215) 249-0400

## The Theater

Little Theater, in which plain people express their love and devotion to the theater is a comparatively modern development — but in Pennridge it flourishes.

Spurred by the proximity to Broadway and Philadelphia theaters, and with many famous authors and theatrical personalities living in Bucks County, Little Theater groups have developed unique "homes"!

Dutch Country Players produces plays from March to November in their playhouse on Route 563, just west of Pennridge. In addition to offering their productions to the public, area civic groups utilize these plays for charitable benefits.

The Town and Country Players Playhouse is a converted barn on Route 263 below Buckingham in Central Bucks.

Pennridge High School sponsors an eight-week summer theatre course as part of their enrichment program. Participants must be current residents of the Pennridge area or have graduated from Pennridge and be between the ages of 16 and 21 years. The group presents two plays during the summer and the public is invited. The High School also presents three plays during the school year: A Senior Play strictly for participation by seniors, an All School Play sponsored by the Junior Class but open to all students, and a Spring Musical Play presented by a cappella choir.

## Rich in Art

The rich flavor of its Pennsylvania Dutch provincial culture has brought such fame to Pennridge that the cosmopolitan look of its art is often overlooked.

The late Walter Emerson Baum (1884-1956) of Sellersville is Pennridge's most famous artist. Paintings by this artist have been purchased for museums to be hung in many collections across the country.

Born of Pennsylvania Dutch extraction in Sellersville, Mr. Baum painted among the villages and cities of this area. He created his own atmosphere of the Pennsylvania Dutch country and his canvases became the very essence of that tradition. But he experimented far from the snow scenes, red silos and barns, white and yellow houses.

The Art Department of the Woman's Club of Perkasie and the Upper Bucks Art Alliance promote a continuing program in art appreciation, augmenting the magnificent museums of cities nearby.

Joseph Meierhans, of Swiss birth and American citizenship, came to Hagersville, Bedminster Township, forty four years ago. He has built a gorgeous manor overlooking the fertile valley and his reputation in modern art has soared. His studies are at the manor.

The Bedminster artist's work has been exhibited throughout the Eastern, Midwestern and Western United States, as well as going on European and Asiatic tours.

Ben Solowey, one of Bucks County's best known artists, has been a resident of Pennridge in Bedminster Township for the past 40 years.

During the 1930s, he was well known in New York City for his perceptive and sensitive character sketches of theatre personalities in the theatre columns of the New York Times and Herald-Tribune.

When World War II brought gas rationing, his wife and he decided to live year-round in their home off Route 113, west of the village of Bedminster.

The artist is also well known for his landscape studies done in wash, charcoal, and opaque watercolor, especially his poetic studies of Haycock Mountain and for his extensive collection of portrait studies of Mrs. Solowey. He regularly devotes part of his time to teaching.

The Soloweys live in a lovely old stone home, in which much of the restoration has been done by the artist.



## National Guard Unit

Company A-228th Supply and Transport Battalion is based at the Pennsylvania National Guard Armory on East Park Avenue in Sellersville. The unit is a part of the Selected Reserve Force set up by the Defense Department.

The function of the company is to provide the 28th Infantry Division with various classes of supplies such as food, clothing, petrol products, equipment and limited facilities for showers for the men in the field.

The National Guard was organized in Sellersville in 1948 with Hg. and Hg. Co. 32nd Quartermaster Group and the 721st Transportation Truck Co. under the command of Colonel Louis G. Cressman. The vehicle storage building was completed in 1949 and the armory in 1955. The first units served in Germany and in Korea from 1950 to 1955. The Sellersville based units were redesignated in 1963.

In addition to preparedness for defense, the National Guard Unit assists many community functions by participating with men, equipment and a variety of individual talents.

## Local Government

### ELECTED BOROUGH POSITIONS

**MAYOR** — The Mayor holds the highest elective office of our Borough. His duties are numerous and include responsibility for the general health, welfare and safety of our community. The Police Department is under his direction. The Mayor also presides and takes part in many public ceremonies. His term of office is four years — there is no limit to the number of terms a person may serve.

**BOROUGH COUNCILS** — Borough Council, composed of seven elected at large members in Dublin, Silverdale and Sellersville, and nine members, three from each ward, in Perkaspie, has vested with it all the legislative powers of our Boroughs. All legislative and policy decisions concerning the communities are made during the monthly Public Council Meetings which are held on dates as advertised in local papers.

All four townships in the Pennridge area; Bedminster, Hilltown, East and West Rockhill, are townships of the second class. Three supervisors are elected at large. A term is for six years and the supervisors elect a chairman. Township supervisors are empowered to appoint officials to various boards and agencies within the township that are deemed necessary to carry out an efficient township government.

Among the officials appointed by the supervisors are secretary, zoning officer, treasurer, solicitor, building inspector, junk yard inspector and members on boards such as the planning commission, zoning hearing board, Bicentennial planning committee, police commission and other regulatory agencies.

The supervisors hold regular monthly or bi-monthly meetings or special meetings as advertised in area newspapers.

Bedminster owns a township building, the former Bedminster school in the village of Bedminster. All the regular municipal business is conducted there.

East Rockhill's municipal building is located at 1622 Ridge Road, just east of the Perkaspie Borough line near Schwenkmill Road. This building was built by students of the Upper Bucks Technical School and finished with professional help at a great savings to the taxpayers.

Hilltown offices are located at State Road, Blooming Glen. This building has a long history, as the Hilltown High School and later the classrooms and administrative offices of the Deep Run Valley School System, one of the components of the Pennridge district.

West Rockhill occupies a new building on Augustine Road, south of the Ridge Road in Almont. The tract is more than ten acres.

## Pierce Library

The Samuel Pierce Branch of the Bucks County Free Library, which began its services to residents of the Pennridge area in a one-room schoolhouse near Silverdale, celebrated its 20th anniversary in 1975, at its present location, 109 South 6th Street, Perkaspie.

Blackboards and a wood-burning stove were important furnishings in the new library when it opened as an educational facility in February, 1955.

The idea of a volunteer-run library for the area was supported enthusiastically by Samuel Pierce, local manufacturer and Philadelphia businessman who owned the former Gehman school building. He assumed all operating expenses and replaced the reminders of school days with book shelves and central heating.

Six volunteers formed the first staff. They worked with a collection of about 1500 second hand books, many of which had been purchased from a small library in New Jersey.

The collection grew to 10,000 volumes and the volunteer staff to thirty. Open hours were increased from the original ten to 24 per week.

Through the cooperation of the county library, Pierce patrons benefitted from bookmobile visits, loans of rotating collections, reference service by telephone and interlibrary loans of specific titles.

In 1970, the Board of Directors of the Bucks County Free Library was responsible for relocating the Pierce Library into the more spacious quarters it now occupies. The following year, it became a branch of the county library system.

Records attest to the steady growth of Pierce Branch's services to area residents. In 1955, the circulation of books and other materials was over 4,000; in 1975, the figures approached 64,000.

## Joe Rodriguez Inc.

### Lawn & Garden Center

151 Baringer Ave. (Rt. 152)

Silverdale, Pa.

257-6857

Complete Line of Lawn & Garden Supplies

# **Simplicity**

Service & Satisfaction

With Every Transaction





Home of the Pearl S. Buck Foundation Near Dublin



## Heldreth's Garage, Inc.

since 1946

Renault Sales & Service

Located on  
Maple Avenue, Sellersville

215-257-2170

## Pearl Buck Foundation

Jerry Morales is an Amerasian youngster living in Manila. In the winter of 1974, a bar maid threw a bottle at a customer and missed, hitting Jerry Morales's eye. A Foundation worker staffed in Manila was notified and the child was immediately taken to the hospital for surgery. Today Jerry is fine and has full use of the once-injured eye.

Jerry Morales is only one of hundreds of thousands of Amerasian children located throughout Asia. Born of Asian mothers and American fathers, these children have been and still are treated cruelly and unjustly only because they are of mixed blood. To be of mixed blood is to be tagged by one's identifying characteristics — the slanted eyes of Asia mixing in with the round wide eyes of the Western world — the lighter or perhaps much darker complexions that are unique giveaways. These two factors along with others guarantee the youngster a life of hardship, discrimination and bitterness for the rest of his life.

Searching throughout Asia, Pearl Buck found hundreds and then thousands of these mixed blood children; all with the same fate ahead of them.

The Pearl S. Buck Foundation opens doors for them, doors that lead to lives of fulfillment and dignity in themselves and their homelands. It is because of people like those in the Pennridge District, who care enough to take the time to educate themselves to the cold, hard facts about Amerasian children, that in so doing, encourage others to do the same. Rather than close their eyes, Pennridge citizens are willing to become involved, concerned Americans and accept some of this responsibility.

Pearl Buck came to live in Hilltown Township in 1934. She grew to know and love and be loved, by the people who live in the Pennridge District and surrounding areas.

While in South Vietnam, Miss Buck saw a crippled child crawling the streets and upon closer investigation noticed the round blue eyes and sandy brown hair that was obviously a trait of his American father — now gone. It was after this experience that Pearl Buck began to think of establishing a Foundation in honor of these children.

In 1964, when she established the Pearl S. Buck Foundation, she also opened new horizons into knowledge of Asian history and culture. With this knowledge of an exquisitely unique lands of the Orient, also came the not so exquisite side to which the Asians want no recognition at all — the over 100,000 Amerasian youngsters.

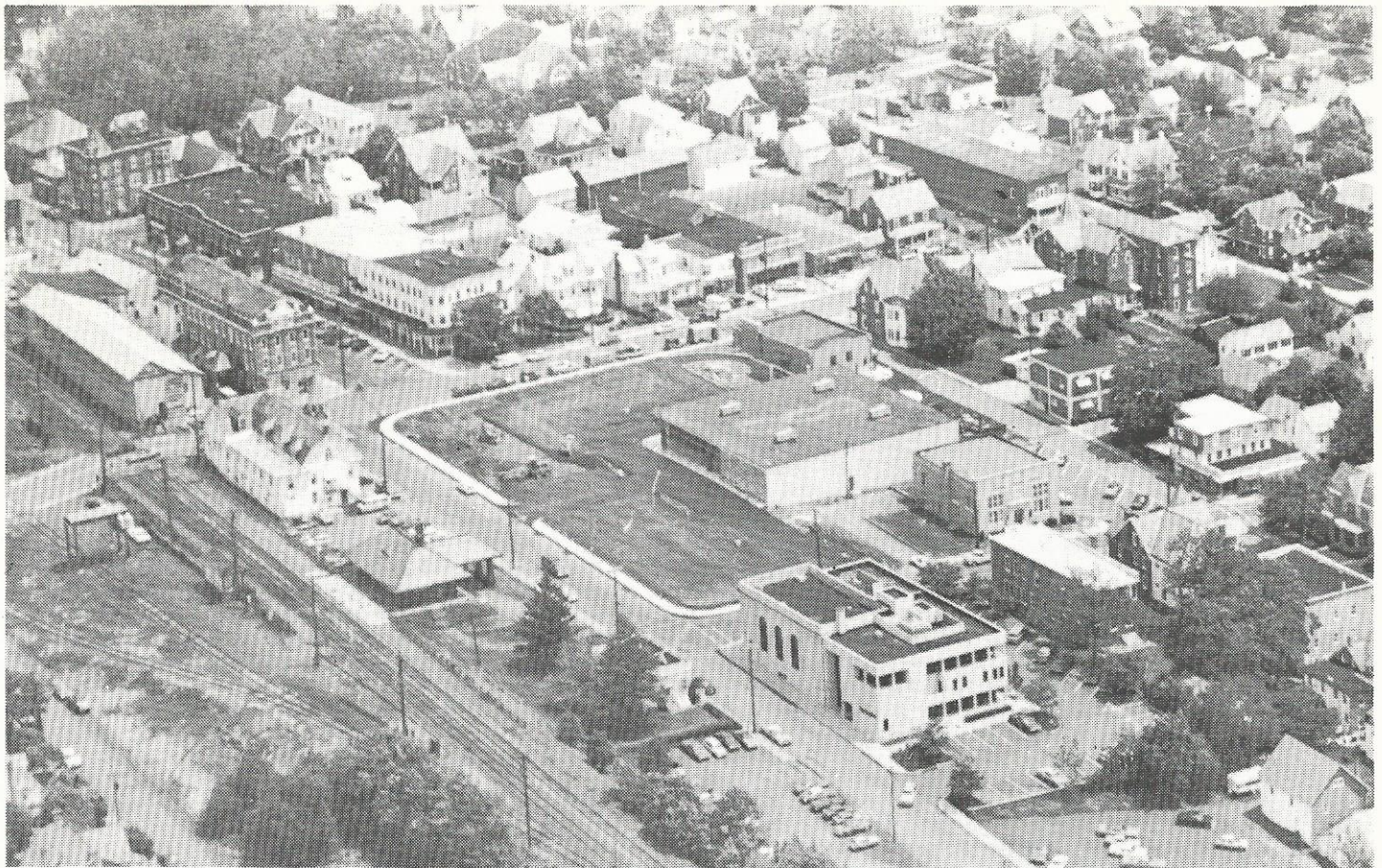
In 1974, Senator Walter Mondale conducted an investigation of the nation's children's charities and found the Pearl S. Buck Foundation to be "the cleanest" organization he had investigated. The Pearl S. Buck Foundation was not even mentioned in the report that was issued later by the Senator. This is something of which we are very proud.

It would have made Pearl Buck proud also because she was fastidious about the way she wanted the Foundation operated, as fastidious as she was about her Hilltown Township home, Green Hills Farm, where she lived the last 39 years of her life. She was devoted to the people and the land of this area, so much so that she instructed that she be buried here, and her grave site is only a few yards off Dublin Road.

The International Headquarters for the Foundation was located in Center City, Philadelphia until October 1974 when we moved to Green Hills Farm, where all of Pearl Buck's tremendous number of awards and memorabilia are housed. We are exceedingly proud to be a part of the community.

Tours are conducted during the weekdays by appointment. Hours of Foundation's operations are 9:00 a.m. to 5:00 p.m. daily — Monday through Friday. Information on tours can be obtained by phoning the Foundation at 215-249-0100 during working hours. The tours entail a visit through Pearl Buck's home and offices and also through the mainstream of our operations — the Support Department.





Downtown Perkasio was Recently Revitalized by Development of Urban Renewal Tract



**James & kingsbury**  
associates

realtors • appraisers • consultants



Main St. & Park Ave.  
Sellersville, Pa.  
257-1133

21 S. Clinton  
Doylestown, Pa.  
345-7300

MEMBER OF TWO MULTIPLE LISTING SERVICES



**BUYING?** Select your new home from  
our Video Tape presentations  
that saves your time, temper and tired feet.

**SELLING?** Let us show and sell your  
home on our exclusive  
Video Homes Selectra TV Net-Work that  
helps eliminate disruptive "In Person"  
tours by "Just Lookers."

**Video Homes Selectra TV**  
Another service at no extra charge.



## PENNRIDGE LITTLE LEAGUE, COMMUNITY LEAGUE

Pennridge Little League was formed in 1954. The league is comprised of anywhere from 21 to 25 teams. The teams are structured on a Major League, Intermediate League and Minor League basis. Players between the ages of 8 and 12 years are eligible to try out for the teams.

Pennridge Little League plays on several fields in the Perkasio and Sellersville Borough systems and is staffed by players from these 2 boroughs. Silverdale, East Rockhill, West Rockhill and parts of Hilltown Township. The Major League Field is located in Perkasio on Walnut Street. This field is known as the "Bill Rhoades Memorial Field." An Intermediate League field is located on an adjacent tract. Two minor fields are in Sellersville off Walnut Street on park property near the Scout cabin. These are known as the Brickajlik Fields.

Pennridge Little League is supported by a ladies auxiliary which operates the refreshment stand at the Major League Field.

The Pennridge Community League is a separate organization which covers baseball and soccer programs, along with a Connie Mack baseball team.

There is also an American Legion baseball team.

## GERMAN HUNGARIAN SOCCER CLUB

The German Hungarian Club, located at Route 152 and Hilltown Pike, has long been a fixture in the community and supports life of Hilltown Township and its environments. The Club was the original sponsor of Soccer teams in the Pennridge area.

The German Hungarian Soccer Club participates in the Inter-County Soccer League. The Club sponsors teams for Pee Wees, Juniors and Adults. Home games are played on Our Lady of Sacred Heart Soccer Field along the Hilltown Pike.



**H. L.  
Garges  
Inc.**

**Fuel Oil — Building Materials**

**4802 Old Bethlehem Pike**

**(Route 309) Telford**

**257-4924**

## Pennridge Sports

### PENNRIDGE UNITED SOCCER CLUB

Three teams from the Pennridge area participate in the Inter-County Soccer League under the banner of the Pennridge United Soccer Club to add to the growing national frenzy in soccer. Midget players 13 to 16 years of age and two Junior teams 16 to 19 years of age compete in the circuit. Games are played on the 12 acre Hilltown Civic Association Field on Route 152.

Management of the Soccer Club is constantly promoting the sport and naturally an invitation is out to all interested youth for an outgrowth of that activity.

The Inter-County Soccer League is a sprawling Philadelphia organization that includes 400 teams for both boys, girls and adults from seven years up.

### DEEP RUN VALLEY SPORTS ASSOCIATION

With participation from three political sub-divisions of Bedminster, Hilltown townships and Dublin Borough, the Deep Run Valley Sports Association qualifies for one of the most active and comprehensive recreation programs in suburban Philadelphia.

The Association sponsors twenty-six baseball teams in four age groups, fourteen girls softball teams in three age groups and twelve soccer teams in three age groups for both boys and girls. Annually more than six hundred young people are engaged in various recreational pursuits under the Deep Run Valley umbrella.

The association owns a 16.5 acre tract with access from both Callowhill Road and Hilltown Pike. There are seven play areas and refreshment stands presently located on the property. A long-range projection calls for the erection of a year-round building with emphasis on winter basketball for both boys and girls.

Deep Run Valley Sports Association started in 1956 as an outgrowth of the Pennridge Little League. Games were played in Dublin Borough and the organization was affiliated with Little League International. Rapid growth precipitated two moves; the International affiliation was dropped and intra-area emphasis placed on meeting local needs; Acquisition of the association's own land was the next natural step.

### SILVERDALE BOROUGH RECREATION

Measured against the tax-supported Park and Recreation Programs of the two largest boroughs in the Pennridge area, Silverdale qualifies for citizens participation recommendation in the establishment of the Silverdale Recreation Association.

Confronted with an obvious need for a Borough Park and Community Hall, and faced with the reality that a small population made tax revenue support impractical, Silverdale citizens launched a do-it-yourself program. The dedication of a new Recreation Building in 1976 culminated eleven years of work toward that goal.

The building is located between Green Street and Baringer Avenue, south of Wenger Avenue, and is located on a 3.5 acre tract in the Silverdale Recreation Association Park. The building consists of a kitchen, restrooms and a very large recreation hall for public use and enjoyment. There is parking for twenty cars. Two tennis courts are scheduled for the tract and a hard surface basketball court is included in the planning.

Work toward this goal originated in June of 1965. In a town-meeting type of gathering, Silverdale Borough citizens met to discuss the need and possibility of forming an organization to provide recreation facilities for the community. Acquisition of land, fund-raising to pay for the property and finally the breaking of ground in 1975 lead to the 1976 success.



# *That Sought After Small Town*

In 1974 Sellersville Borough celebrated the 100th anniversary of the incorporation of the borough. The Historical and Achievement Authority published a 100-page book with history and hundreds of pictures, new and old. Excerpts from this book follow:

This book is published as an inspiration and also as an historical document to record the physical structure of the borough and its people who serve in government, volunteer organizations, civic, veteran, and fraternal bodies, industry, commerce and churches.

Nationally we are experiencing an oil and gasoline shortage that affects everyone. Food prices are on the rise. Inflation is running at the rate of 8 to 10 percent annually. The House of Representatives has voted 410 to 4 to "investigate fully and completely whether sufficient grounds exist for the House to exercise its constitutional power to impeach Richard M. Nixon, President of the United States of America."

Meanwhile, Sellersville and other small towns provide the nation with "the building blocks for the revitalization of the countryside." Sellersville gives its citizens the best of two worlds: urban amenities and the less-cluttered style of country living.

While big cities have been fighting to rid themselves of dry rot and while the suburbs have begun to gray the faces and dreams of middle-class Americans, the small town has been luring millions of people in — or back.

In this celebration year of 1974, our nation is poll-conscious and statistic-bent.

Almost without notice, the tide of rural to urban migration that characterized post World War II America in the 1940s has now completely turned, according to the Population Research Service. The study shows that in the 1950s the net movement from non-metropolitan to metropolitan areas was 5.5 million people. In the 1960s it was 2.2 million people, a significant reduction. It was estimated that between the spring of 1970 and July of 1972 the net movement from the metropolitan to the non-metropolitan areas was 300,000 to 500,000 people, a reversal.

And Sellersville epitomizes everything that attracted in creating that reversal.

Given a choice, many Americans who haven't done so would quickly move to a small town. The Gallup Poll, one of the leading pollsters of our time, found not long ago that one in five was unhappy with the quality of life in his city. Of those living in cities of one million or more, one in three said they wanted out. In a National Opinion Research Center poll last year, half of the persons living in cities of 50,000 or more said they wanted to move to smaller towns or the countryside, but within easy commuting distance of a large city.

The statistics, however, are less of the story than the lives and personalities of families that have found excitement, happiness, and abundance in small towns.

Surprises abound. These families are affluent, even by big-city standards. They travel extensively. They wear smart clothes (if they choose). They read widely. And they smile a lot.

Sellersville is that sought-after small town.



For information on Sellersville  
Contact

**Sellersville Chamber of Commerce**

Church Street  
215-257-

Sellersville, Pa.  
18960

For Pennridge Real Estate Information  
Contact



257-8051

Broker James J. Hackett, a lifelong Pennridge resident, served as editor in the publication of this book. It may be purchased at the Borough Hall, Church Street, Sellersville and other area locations.





"Come On, Get 'Em Up Boys" — A typical Scene from Midget Football Practice

## *Midget Football*

Pennridge (Russell K. "Sig" Shelly Memorial) Green Jackets Association conducts a midget football program for boys 8 to 14 years old who reside in the Pennridge school district. Every boy is invited to try out for the teams. The league is structured in three weight categories — 80, 95 and 118 lbs.

Pennridge Green Jackets carry the name from the Sellersville Green Jackets, one of the most successful amateur football programs in Eastern Pennsylvania from 1925 to 1955.

The Pennridge Green Jackets are a member of the Bucks-Mont Midget Football League and are affiliated with the Pop Warner Little Scholars, a national organization.

The teams are well uniformed, excellently coached, insured and every effort is made to create a safe and healthy athletic experience. The Green Jackets Ladies Auxiliary offer an excellent opportunity for players' mothers and interested women to lend volunteer efforts in supporting the football programs.

In addition, an elaborate program of cheerleading, pom-poms and twirling offer an avenue of participation for young girls. The Green Jackets play all their home games in daylight hours and under the lights on the Pennridge High School Football field.

## *Upper Bucks YMCA*

The UPPER BUCKS YMCA originated in the late 1960s, meeting in a church at Third and Broad Streets, Quakertown. The location, having been changed several times, is now 151 S. 14th Street, Quakertown, and serves the Pennridge area.

Yearly membership fees for the use of the Y entitle a member to full privileges, which include: unlimited use of pool, unlimited use of weight room for persons 16 years and over. (Those under 16 must be accompanied by an adult), participation in programs and swim lessons at a reduced rate and placement on the mailing list.

1976 fees are: \$50 for adults 19-59 yrs.; \$25 for Senior Citizens 60 yrs. and over; \$30 for children 7-18 years; \$30 for college students with identification cards; \$110 family rate for both parents and all children under 18 years.

The Upper Bucks Y also offers a social membership for \$20, allowing the card holder to participate in classes at a special rate. The social member also receives five passes entitling him to five visits to the pool or weight room.

A multitude of courses are offered to members and non-members alike. Some of the courses are gymnastics, summer day camps, arts and crafts, baton lessons, drawing and painting, first aid, horseback riding, martial arts (Judo, Karate etc.), slimnastics, tennis, therapeutic massage, tumbling, belly dancing, bridge, golf, photography, square dancing, volleyball, chess and guitar, as well as many pool activities such as swimming lessons, safety classes, canoeing, scuba and swimming for the handicapped.



## Scouting — Girls & Boys

Every girl and boy in Pennridge has every opportunity to participate in all levels of scouting. Active boy and girl councils meet every need with dedicated leaders.

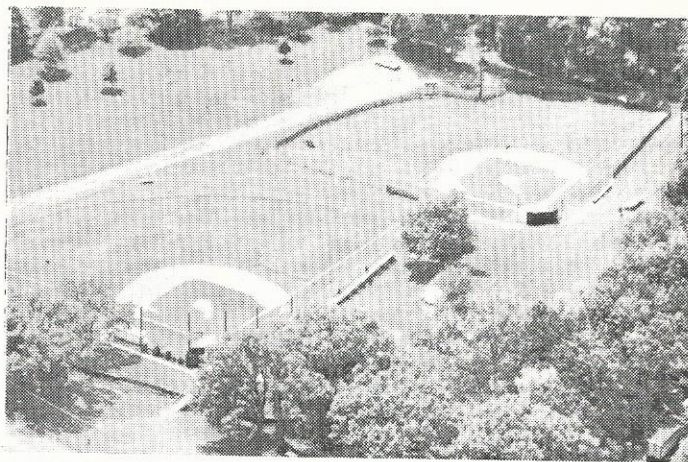
These scouting programs are punctuated through summer camping activities. For instance, Camp Tohikanee, the Girl Scout Camp near Thatcher and Camp Ockanickon, the Boy Scout Camp near Point Pleasant, both in Upper Bucks County, are examples of the diversified living. Youths from the towns and townships can leave their homes and within a few miles find the rugged life of the hills.

In Sellersville's Lake Lenape Parkway and on the Blooming Glen Athletic Association field, Scout Cabins have been built for area use. The Sellersville Cabin was built by the Kiwanis Club while the Glen structure was built by the Hilltown Lions Club. In addition, churches, clubs and homes provide meeting places for the comprehensive Scouting programs.

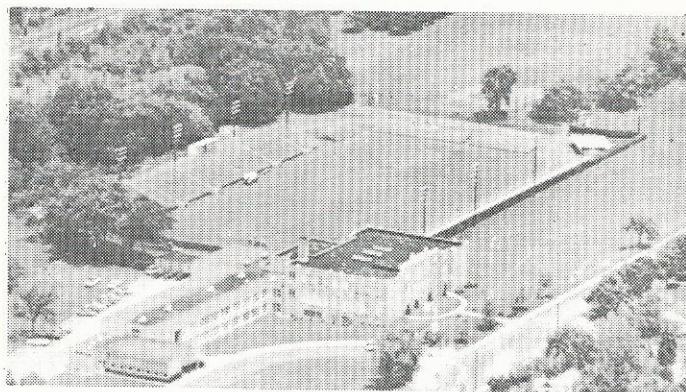
## Retardation Programs

The Bucks County Association for Retarded Children conducts the Upper Bucks sheltered workshop and pre-school nursery in the former Sellersville Elementary School. The Bucks County Board of School Directors sponsors a special education class for 16 to 21 year old students in the same building, creating a transitional environment between school and productive positions in industry.

Both programs have been highly successful. The Pennridge Jaycees and Jayceettes lend support to the program, making themselves available to assist in any area.



Baseball Fields in Perkasio's Beautiful Parkway



Aerial View of Gridiron Behind South Junior High

# TOP INTEREST ON INSURED SAVINGS AND OTHER FINE FINANCIAL SERVICES

**SOUDERTON**  
*Savings* & LOAN ASSOCIATION



Main St. & Baringer Ave., SILVERDALE  
15 Washington Avenue, SOUDERTON  
500 Harleysville Pike, FRANCONIA

257-9600  
723-6711  
723-7800



## Pennridge Growth Plans

After an intensive population study, the Bucks County Planning Commission has predicted a rapid growth for the Pennridge area with the completion of a regional sewer plant. The greatest growth is scheduled along the new interceptor lines that will be installed in the boroughs and populated centers in the townships close to the borough borders.

### BOROUGHES

	1976	1980	1985
Dublin	1,247	1,350	1,440
Perkasie	5,583	7,400	8,200
Sellersville	2,965	4,228	4,561
Silverdale	572	583	627
	<hr/> 10,367	<hr/> 13,561	<hr/> 14,828

### TOWNSHIPS

Bedminster	3,589	3,816	4,268
East Rockhill	3,097	3,990	4,957
Hilltown	8,406	8,882	11,248
West Rockhill	3,451	5,300	6,300
	<hr/> 18,543	<hr/> 21,988	<hr/> 26,773

## Assessed Valuation

The basis for Real Estate Taxation in the Pennridge municipalities is the "Assessed Value" of each property.

Assessed Value is determined by taking 25 percent of the "Market Value" of a property. This assessment of valuation of each property is performed by the Bucks County Board of Assessment. The 1976 Fiscal Year "Assessed Values" of property, land and improvements in the local townships and boroughs:

Bedminster	\$8,673,560
East Rockhill	5,585,510
Hilltown	21,715,550
West Rockhill	6,936,100
Dublin	2,416,650
Perkasie	9,504,550
Sellersville	5,182,840
Silverdale	845,840
<hr/> Total	<hr/> \$60,860,500

## Veterans Organizations

Pennridge enjoys a year-round patriotism program under the guidance and spur of the veterans' organizations. Hartzell-Crouthamel American Legion Post No. 280, Perkasie, Nase-Kraft American Legion Post No. 255, Sellersville, and Forrest Lodge Veterans of Foreign Wars Post No. 245 meet separately but act in union. All have their own post homes.

The Legion Posts promote patriotism in the schools with annual joint awards to the public and parochial schools of the area. Annual Memorial Day Parades of splendor are the highlight of the spring school year.

The three posts conduct an active program of care in all veterans' affairs at the local, state and national levels.



## Shelly & Sons - Fenstermacher Co., Inc.

Shelly & Sons is a building materials and hardware firm whose customers are contractors and homeowners alike. Shelly's has been in business here for over 30 years, and have a long tradition of service and knowledge in the construction industry. The Firm's recently completed new retail store attests to their success and faith in the growing economy of the Upper Bucks County area.

7th & Market Streets, Perkasie 18944  
Phone (215) 257-6842

 **Our  
best  
Interest  
is in your  
account...**

There are 10 convenient locations to serve you:

**PERKASIE**: 620 Chestnut Street, Glenwood/5th Street;

**QUAKERTOWN**: Quaker Village Shopping Center\*, Quakertown

Plaza Shopping Center; **SOUDERTON**: County Line Plaza Shopping

Center\*; **DUBLIN**: 145 Main Street\*; **PLUMSTEAD**: Route 611;

**CHALFONT**: 191 E. Butler Avenue, Chalfont Village Shopping

Center\*; **DOYLESTOWN**: Cross Keys Office Center.

\*Offer REDDYBUCKS 24-hour banking.



Helping you change things for the better...

**Bucks County Bank**

AND TRUST COMPANY

MEMBER FEDERAL DEPOSIT INSURANCE CORPORATION



# Patrons

**Ametek, Inc.**  
U.S. Gauge Division  
Sellersville, Pa.  
257-6531

**Associated Marking & Printing Co.**  
Printing-Rubber Stamps  
7th and Walnut Sts., Perkasio  
257-2539

**Benner's Food Market**  
Groceries  
13 N. 7th Street, Perkasio  
257-2419

**Bernard Suess**  
Funeral Home 606 Arch Street,  
Perkasio  
257-2144

**Brensinger's TV**  
Sales and Service  
Tylersport, Pa.  
257-6226

**Bryant Aviation**  
Pennridge Airport  
Ridge Road, Perkasio  
257-9669

**Edward G. Browning**  
Real Estate  
113 S. Sixth St., Perkasio  
257-3676

**Clair's Flower Shop**  
Flowers for Every Occasion  
308 W. Callowhill St., Perkasio  
257-4653

**Cressman's TV**  
Sales & Service  
7th and Callowhill, Perkasio  
257-2800

**Dembrosky's Restaurant**  
Luncheon-Dinner-Cocktails  
Route 113, Silverdale  
257-9936

**A. W. Frantz**  
Plumbing & Heating  
119 N. 6th Street, Perkasio  
257-4530

**Gulden's Lawn & Garden**  
Sales and Service  
Route 309 and Ridge Rd., Sellersville  
257-2567

**Paul S. Hendricks Inc.**  
Arco Heating Oil  
Box 145, Hilltown  
822-0852

**Hunsberger Electric**  
Electrical Contracting & Maintenance  
312 Arch Street, Perkasio  
257-4592

**I.G.'s Ag Sales**  
Farm, Lawn and Garden Equipment  
Silverdale, Pa.  
257-5135

**Labelcraft Press**  
Printing of Distinction  
4th and Spruce Sts., Perkasio  
257-6368

**Miller & Moyer**  
Watchmakers and Jewelers  
Fifth and Walnut Sts., Perkasio  
257-6879

**Moyer's Markets**  
Two Convenient Locations  
Perkasio and Silverdale  
257-5191

**Mel Nace, C.L.U.**  
State Farm Insurance  
Main and Park Ave., Sellersville  
257-2711

**Pennridge Cable TV**  
For the Best in TV Reception  
N. 7th Street, Perkasio  
257-8046

**Penn Builders Inc.**  
General Contractors  
80 N. Main St., Sellersville

**Prodesco, Inc.**  
Textile Development  
Seventh and Park Ave., Perkasio  
215-257-6566

**Schoeller's**  
Appliances — Commercial Heating & Wiring  
619 Market Street, Perkasio  
257-5131

**Sergio's Hair Styling**  
Village of Glen Wood  
Shopping Center  
257-3935

**J. C. Steinly, Inc.**  
Texaco Petroleum Products  
817 Market Street, Perkasio  
257-2739

**Stover Feed Company**  
Feed-Grain-Seeds-Fertilizer  
Seventh Street, Perkasio  
257-2966

**Lee Stover**  
Insurance  
1 S. 5th Street, Perkasio  
257-2260

**C.R. Strunk Funeral Home**  
Successor to W. Lee Wilhelm  
219 N. Main St., Sellersville  
257-6325

**Wigwam Nursery School**  
And Private Kindergarten  
600 S. Main St., Sellersville  
257-9747

**Weidner's Fuel Oil**  
Home Heating Comfort  
1000 Branch Road, Perkasio  
257-6031

**Weidner's Plumbing & Heating**  
Sales & Service  
1000 Branch Road, Perkasio  
257-6031

**Village Square Pharmacy**  
Stan Rudolph, prop.  
5th and Blooming Glen Rd., Perkasio  
257-8737

**V & M Tool Company, Inc.**  
Tools-Gauges-Fixtures  
1211 N. 5th St., Perkasio  
257-6511





**FEDERAL  
SAVINGS  
AND LOAN  
ASSOCIATION  
OF PERKASIE**

*The Country*  
1776-1977 ... and growing  
*The Association*  
1922-1977 ... and growing



## Little Things In a Big Land

The map to the left demonstrates the service area of First Federal Savings and Loan Association. There are now four offices in the big land area west of the Delaware River. First Federal merged with Dublin Building and Loan Association in 1976.

From one office in Perkasia to two offices in Perkasia and a merger with the Riegelsville Building and Loan Association in 1971, it has been the ability of First Federal to handle the little things that has led to financial responsibility in this big land.

First Federal handles family financial counseling in this big land, because of the Association's strong local representatives. Each office is staffed with people who really know each community's people. The Association's Board of Directors is comprised of people who aggregately really know each community's people.

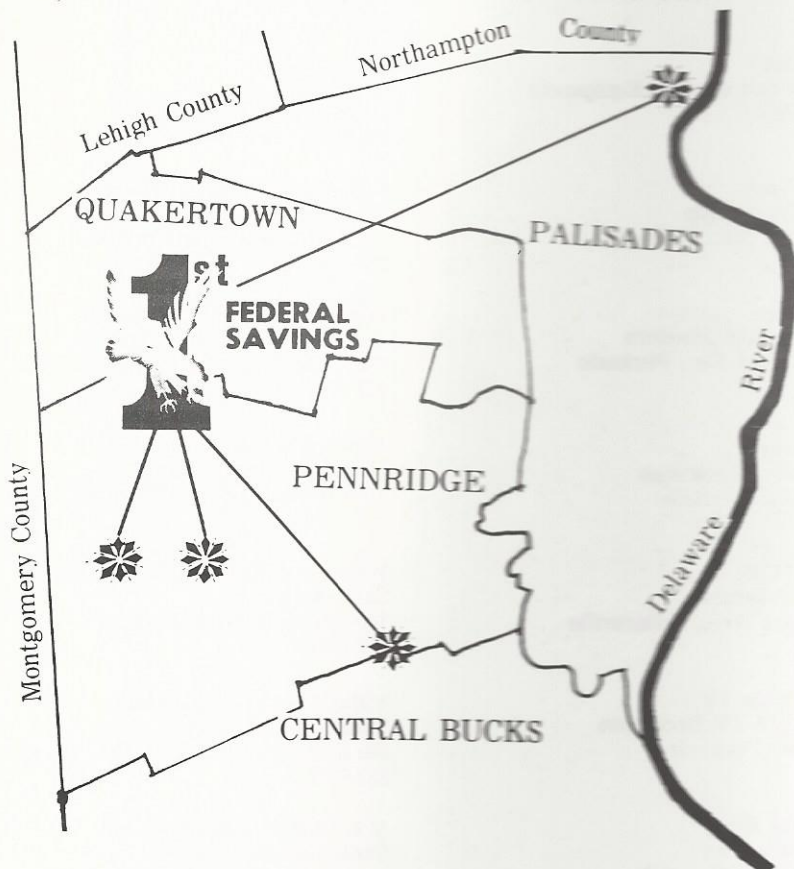
First Federal can handle family financial counseling in this big land area, because the Association is good with the little things through that strong local representation.

The Association offers financial services on a one-to-one basis. And that means your needs get taken care of. Always.

It also means that the Association learned to keep matters uncomplicated. Direct. Shaped to the times and what you need and want.

From personal savings, to individual and employer retirement programs, to home ownership and home improvement loans, consult this Association.

First Federal Officers, Directors and Staff never forget that the Association belongs to the members only as good as the service we give.



**Total Assets As Of  
December 31, 1976 \$49,864,927.87**

### WHERE WE ARE:

**Perkasie**

4th & Market 257-7922  
Village Square Mall  
N. 5th St. 257-5825

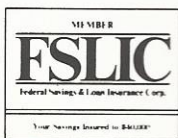
**Dublin**

Rt. 313  
249-3833

**Riegelsville**

Durham & Delaware  
Roads 749-2129

### Services available at FIRST FEDERAL SAVINGS



Passbook Savings  
Investment Savings  
Savings Certificates  
Christmas Club

Vacation Club  
Tax Club  
Direct Reduction Mortgage Loans  
Construction Mortgage Loans

Straight Mortgage Loans  
Land Acquisition Loans  
Savings Share Loans  
Home Improvement Loans



# Emergency Telephone List

<u>Location</u>	<u>Police</u>	<u>Fire</u>	<u>Municipal Hall</u>
Bedminster Township	795-2931	249-3444	
Dublin Borough	249-3397	249-3444	249-3310
East Rockhill	257-4163	257-2224 (Perkasie)	
Hilltown Township	257-9491	257-6876 (Silverdale) 822-0550 (Line Lexington)	
Perkasie Borough		257-2224	257-5065
Sellersville Borough	257-2022	257-4611	257-5075
Silverdale Borough	257-2444	257-6876	257-5550
West Rockhill Township	795-2931 257-6070	257-4611 (Sellersville)	

---

Ambulance Service	257-2224
	249-3444
Grand View Hospital	257-3611
Pennridge School System	257-5011
Pierce Free Library	257-2821

Pa. State Police	
(Dublin Barracks)	249-9191
Police Radio Room	795-2931

---





# Pennridge Chamber of Commerce

*"Progress Thru Community Service"*



*A Scene from Our Annual Community Day Held Each Summer*

**Nearly 200 business and professional firms  
serving their community with the objective**

*"To do what ever may be required to keep the  
economic conditions in Pennridge such that people  
will be willing to risk their time, talent and money,  
in the hope of conducting a successful business."*

607 Chestnut St.  
Perkasie, Pa. 18944  
(215) 257-5390